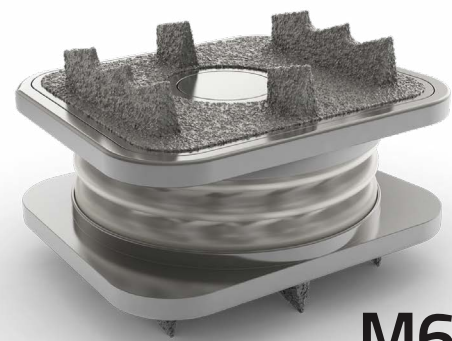


PATIENT FOCUSED. PROVEN RESULTS.

The M6-C™ disc is the only FDA-approved artificial cervical disc designed to mimic the natural motion of a native cervical disc with six degrees of motion.



M6-C™
Artificial Cervical Disc

70,000+ Devices Implanted
in over **20 countries***



More than
12,000
M6-C discs have been implanted
for more than **10 years***

#1

Implanted artificial cervical disc in Australia
and most-studied cervical disc in the
Australian Orthopedic Association
National Joint Replacement Registry

REAL WORLD EVIDENCE

Results of a Kaplan Meier analysis of
the M6-C disc based on

16 years

of real world evidence suggest a global cumulative
survivorship (percentage of implanted devices that
are still intact and functional at a specific time
period) of **99% at 10 years**



U.S. IDE 5-YEAR RESULTS

5 year

Evidence from the U.S. IDE clinical trial
continues to demonstrate the safety and
efficacy of the M6-C artificial cervical disc

VAS score of
0.5

At 5 years, post-op subjects had a mean
Shoulder/Arm pain VAS score of 0.5, which
was significantly better than the mean of 2.1
observed in the ACDF control group

At the 5-year endpoint, the M6-C disc continues to
demonstrate one of the

Lowest Subsequent
Surgical Intervention
Rates at 3.1%

when compared to other FDA-approved artificial cervical discs*

NDI score of
8.0

At 5 years post-op, M6-C patients had a mean NDI
score of 8.0 - which indicates mild disability compared
to 18.0 in the ACDF group, indicating moderate disability

*Data on file

Orthofix products or services referenced herein are trademarks or registered trademarks of Orthofix Medical Inc. and its group of companies. Any rights not expressly granted herein are reserved.