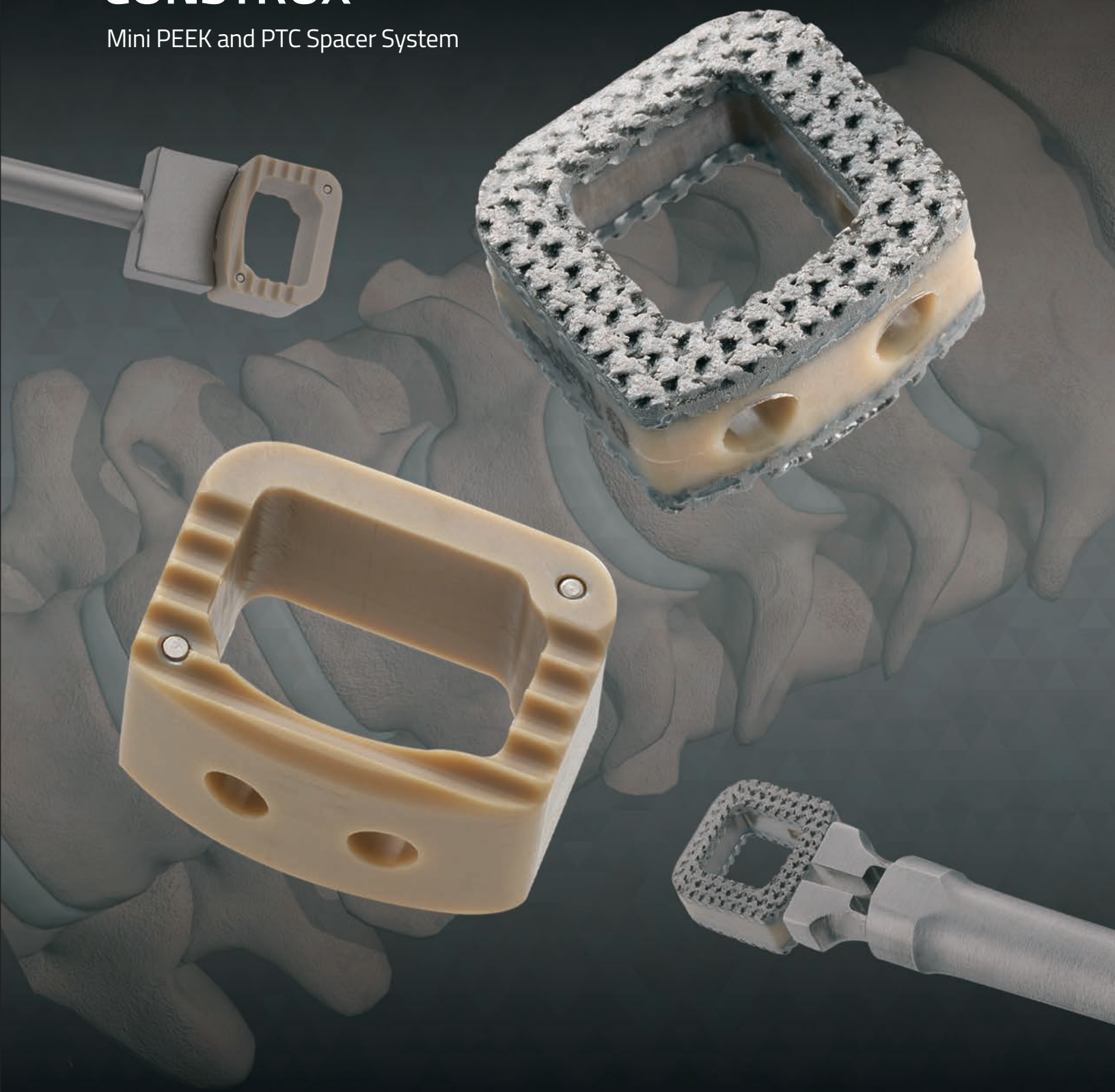


CONSTRUX®

Mini PEEK and PTC Spacer System



Simple yet comprehensive, reliable and amazingly versatile

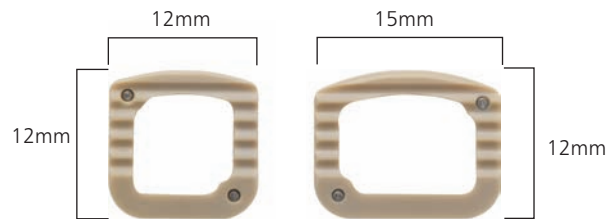
CONSTRUX Mini offers implant options with heights ranging from 5mm to 14mm as a cervical interbody or partial vertebrectomy solution. Its large graft window promotes fusion potential while its two footprint designs and lordotic angles cater to a broad range of patient anatomy. Aggressive anti-migration ribs grip the endplates and four titanium markers enhance intraoperative visibility.

Competitive Design Advantages

- Radiolucent implant with titanium markers for intraoperative visibility
- Anti-migration ribs for secure placement
- Large center opening for packing bone grafting material
- Multiple implant options enable various surgical solutions
- Straightforward instrumentation for easy implantation

2 Footprints

- 12mm x 12mm
- 15mm x 12mm



Parallel and Lordotic (5°)

- 5mm-14mm heights
- 1mm increments



AP Fluoroscopy with Construx Mini PEEK



Lateral Fluoroscopy with Construx Mini PEEK

Construx Mini PEEK Implant Caddy (OPTIONAL)
Part# 47-9113

12mm x 12mm Parallel Implants

Part #	Description	Graft Vol. (cc)
47-3105C	12mm W x 12mm L, Parallel - 5mm H	0.31
47-3106C	12mm W x 12mm L, Parallel- 6mm H	0.37
47-3107C	12mm W x 12mm L, Parallel - 7mm H	0.43
47-3108C	12mm W x 12mm L, Parallel - 8mm H	0.49
47-3109C	12mm W x 12mm L, Parallel - 9mm H	0.55
47-3110C	12mm W x 12mm L, Parallel - 10mm H	0.61
47-3111C	12mm W x 12mm L, Parallel - 11mm H	0.67
47-3112C	12mm W x 12mm L, Parallel - 12mm H	0.73
47-3113C	12mm W x 12mm L, Parallel - 13mm H	0.79
47-3114C	12mm W x 12mm L, Parallel - 14mm H	0.85

Construx Mini PEEK Implant Caddy (OPTIONAL)
Part# 47-9114

15mm x 12mm Parallel Implants

Part #	Description	Graft Vol. (cc)
47-4105C	15mm W x 12mm L, Parallel - 5mm H	0.43
47-4106C	15mm W x 12mm L, Parallel - 6mm H	0.51
47-4107C	15mm W x 12mm L, Parallel - 7mm H	0.59
47-4108C	15mm W x 12mm L, Parallel - 8mm H	0.67
47-4109C	15mm W x 12mm L, Parallel - 9mm H	0.76
47-4110C	15mm W x 12mm L, Parallel - 10mm H	0.84
47-4111C	15mm W x 12mm L, Parallel - 11mm H	0.92
47-4112C	15mm W x 12mm L, Parallel - 12mm H	1.00
47-4113C	15mm W x 12mm L, Parallel - 13mm H	1.08
47-4114C	15mm W x 12mm L, Parallel - 14mm H	1.17

Construx Mini PEEK Implant Caddy (OPTIONAL)
Part# 47-9115

12mm x 12mm Lordotic Implants

Part #	Description	Graft Vol. (cc)
47-3005C	12mm W x 12mm L, 5° Lordotic - 5mm H	0.28
47-3006C	12mm W x 12mm L, 5° Lordotic - 6mm H	0.34
47-3007C	12mm W x 12mm L, 5° Lordotic - 7mm H	0.40
47-3008C	12mm W x 12mm L, 5° Lordotic - 8mm H	0.46
47-3009C	12mm W x 12mm L, 5° Lordotic - 9mm H	0.52
47-3010C	12mm W x 12mm L, 5° Lordotic - 10mm H	0.58
47-3011C	12mm W x 12mm L, 5° Lordotic - 11mm H	0.64
47-3012C	12mm W x 12mm L, 5° Lordotic - 12mm H	0.70
47-3013C	12mm W x 12mm L, 5° Lordotic - 13mm H	0.76
47-3014C	12mm W x 12mm L, 5° Lordotic - 14mm H	0.82

Construx Mini PEEK Implant Caddy (OPTIONAL)
Part# 47-9116

15mm x 12mm Lordotic Implants

Part #	Description	Graft Vol. (cc)
47-4005C	15mm W x 12mm L, 5° Lordotic - 5mm H	0.38
47-4006C	15mm W x 12mm L, 5° Lordotic - 6mm H	0.47
47-4007C	15mm W x 12mm L, 5° Lordotic - 7mm H	0.55
47-4008C	15mm W x 12mm L, 5° Lordotic - 8mm H	0.63
47-4009C	15mm W x 12mm L, 5° Lordotic - 9mm H	0.71
47-4010C	15mm W x 12mm L, 5° Lordotic - 10mm H	0.79
47-4011C	15mm W x 12mm L, 5° Lordotic - 11mm H	0.88
47-4012C	15mm W x 12mm L, 5° Lordotic - 12mm H	0.96
47-4013C	15mm W x 12mm L, 5° Lordotic - 13mm H	1.04
47-4014C	15mm W x 12mm L, 5° Lordotic - 14mm H	1.12

*Items in blue available upon request only.



CONSTRUX® Mini PTC

PEEK TITANIUM COMPOSITE SPACER SYSTEM

Combines the Advantages of PEEK and Titanium

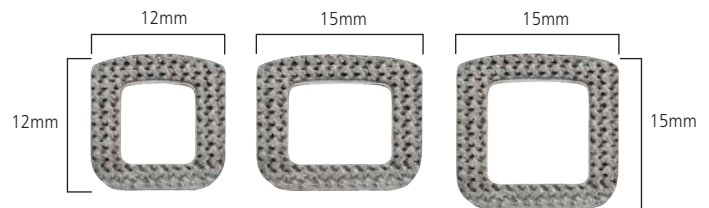
The CONSTRUX® Mini PTC Spacer System has been designed to optimize Anterior Cervical Procedures with a proprietary technology that combines PEEK and titanium into a porous interbody solution for the cervical spine. This PEEK/Titanium hybrid is designed with an optimal porosity and pore size to create a 3D porous structure that allows the patient bone to grow into the porous titanium endplates. The implant also features a PEEK core with porous titanium endplates which allows for post and intraoperative imaging without image distortion compared to metal designs currently on the market. The CONSTRUX Mini PTC Spacer System offers three footprints to address the cervical interbody fusion solution. The implants are available in both parallel and lordotic angles with heights of 6mm-12mm in one-millimeter increments.

Competitive Design Advantages

- Porous titanium endplates allow bone to grow within
- PEEK core to obtain imaging properties while assessing fusion
- Large center opening for packing bone grafting material
- Multiple implant options to enable various surgical solutions
- Straightforward instrumentation for easy implantation

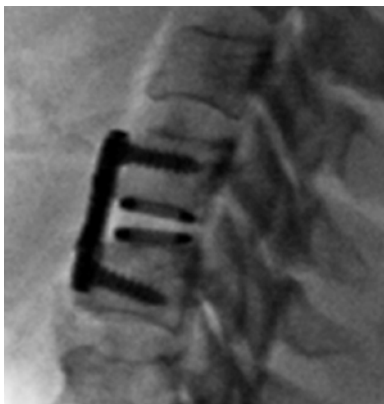
3 Footprints

- 12mm x 12mm
- 15mm x 12mm
- 15mm x 15mm

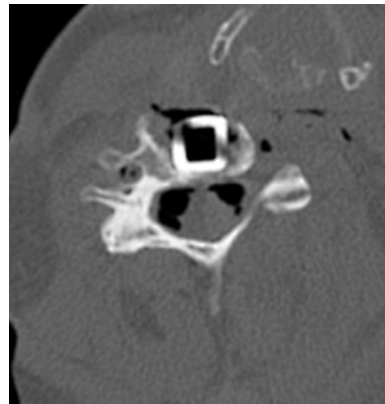


Parallel and Lordotic (5°)

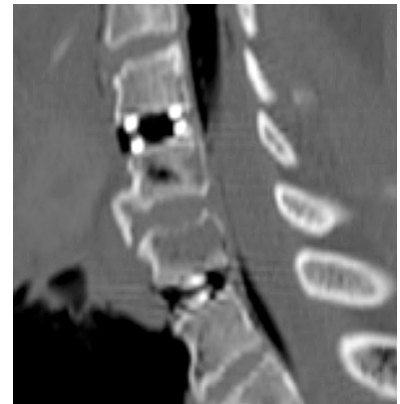
- 6mm-12mm heights
- 1mm increments



Lateral fluoroscopy with CONSTRUX Mini PTC



Axial CT scan with CONSTRUX Mini PTC



Sagittal CT scan with CONSTRUX Mini PTC

Construx Mini PTC Implant Set Part# 37-7000

Part #	Description	Graft Vol. (cc)
37-3006SP	12mm W x 12mm L, 5° Lordotic - 6mm H	0.28
37-3007SP	12mm W x 12mm L, 5° Lordotic - 7mm H	0.33
37-3008SP	12mm W x 12mm L, 5° Lordotic - 8mm H	0.37
37-3009SP	12mm W x 12mm L, 5° Lordotic - 9mm H	0.43
37-3010SP	12mm W x 12mm L, 5° Lordotic - 10mm H	0.48
37-3011SP	12mm W x 12mm L, 5° Lordotic - 11mm H	0.52
37-3012SP	12mm W x 12mm L, 5° Lordotic - 12mm H	0.57

37-3106SP	12mm W x 12mm L, Parallel - 6mm H	0.31
37-3107SP	12mm W x 12mm L, Parallel - 7mm H	0.35
37-3108SP	12mm W x 12mm L, Parallel - 8mm H	0.40
37-3109SP	12mm W x 12mm L, Parallel - 9mm H	0.45
37-3110SP	12mm W x 12mm L, Parallel - 10mm H	0.50
37-3111SP	12mm W x 12mm L, Parallel - 11mm H	0.55
37-3112SP	12mm W x 12mm L, Parallel - 12mm H	0.60

37-4006SP	15mm W x 12mm L, 5° Lordotic - 6mm H	0.39
37-4007SP	15mm W x 12mm L, 5° Lordotic - 7mm H	0.46
37-4008SP	15mm W x 12mm L, 5° Lordotic - 8mm H	0.53
37-4009SP	15mm W x 12mm L, 5° Lordotic - 9mm H	0.60
37-4010SP	15mm W x 12mm L, 5° Lordotic - 10mm H	0.67
37-4011SP	15mm W x 12mm L, 5° Lordotic - 11mm H	0.74
37-4012SP	15mm W x 12mm L, 5° Lordotic - 12mm H	0.81

Construx Mini PTC Implant Set Part# 37-7000

Part #	Description	Graft Vol. (cc)
37-4106SP	15mm W x 12mm L, Parallel - 6mm H	0.43
37-4107SP	15mm W x 12mm L, Parallel - 7mm H	0.50
37-4108SP	15mm W x 12mm L, Parallel - 8mm H	0.57
37-4109SP	15mm W x 12mm L, Parallel - 9mm H	0.64
37-4110SP	15mm W x 12mm L, Parallel - 10mm H	0.71
37-4111SP	15mm W x 12mm L, Parallel - 11mm H	0.77
37-4112SP	15mm W x 12mm L, Parallel - 12mm H	0.85

37-5006SP	15mm W x 15mm L, 5° Lordotic - 6mm H	0.55
37-5007SP	15mm W x 15mm L, 5° Lordotic - 7mm H	0.65
37-5008SP	15mm W x 15mm L, 5° Lordotic - 8mm H	0.75
37-5009SP	15mm W x 15mm L, 5° Lordotic - 9mm H	0.84
37-5010SP	15mm W x 15mm L, 5° Lordotic - 10mm H	0.94
37-5011SP	15mm W x 15mm L, 5° Lordotic - 11mm H	1.04
37-5012SP	15mm W x 15mm L, 5° Lordotic - 12mm H	1.14

*Items in blue available upon request only.



Modular Trials Caddy (OPTIONAL) Part# 47-9117

Part #	Description
47-1005	12mm W x 12mm L, 5° Lordotic - 5mm H
47-1006	12mm W x 12mm L, 5° Lordotic - 6mm H
47-1007	12mm W x 12mm L, 5° Lordotic - 7mm H
47-1008	12mm W x 12mm L, 5° Lordotic - 8mm H
47-1009	12mm W x 12mm L, 5° Lordotic - 9mm H
47-1010	12mm W x 12mm L, 5° Lordotic - 10mm H
47-1011	12mm W x 12mm L, 5° Lordotic - 11mm H
47-1012	12mm W x 12mm L, 5° Lordotic - 12mm H
47-1013	12mm W x 12mm L, 5° Lordotic - 13mm H
47-1014	12mm W x 12mm L, 5° Lordotic - 14mm H
47-1105	12mm W x 12mm L, Parallel - 5mm H
47-1106	12mm W x 12mm L, Parallel - 6mm H
47-1107	12mm W x 12mm L, Parallel - 7mm H
47-1108	12mm W x 12mm L, Parallel - 8mm H
47-1109	12mm W x 12mm L, Parallel - 9mm H
47-1110	12mm W x 12mm L, Parallel - 10mm H
47-1111	12mm W x 12mm L, Parallel - 11mm H
47-1112	12mm W x 12mm L, Parallel - 12mm H
47-1113	12mm W x 12mm L, Parallel - 13mm H
47-1114	12mm W x 12mm L, Parallel - 14mm H
47-2005	15mm W x 12mm L, 5° Lordotic - 5mm H
47-2006	15mm W x 12mm L, 5° Lordotic - 6mm H
47-2007	15mm W x 12mm L, 5° Lordotic - 7mm H
47-2008	15mm W x 12mm L, 5° Lordotic - 8mm H
47-2009	15mm W x 12mm L, 5° Lordotic - 9mm H
47-2010	15mm W x 12mm L, 5° Lordotic - 10mm H
47-2011	15mm W x 12mm L, 5° Lordotic - 11mm H
47-2012	15mm W x 12mm L, 5° Lordotic - 12mm H
47-2013	15mm W x 12mm L, 5° Lordotic - 13mm H
47-2014	15mm W x 12mm L, 5° Lordotic - 14mm H
47-2105	15mm W x 12mm L, Parallel - 5mm H
47-2106	15mm W x 12mm L, Parallel - 6mm H
47-2107	15mm W x 12mm L, Parallel - 7mm H
47-2108	15mm W x 12mm L, Parallel - 8mm H
47-2109	15mm W x 12mm L, Parallel - 9mm H
47-2110	15mm W x 12mm L, Parallel - 10mm H
47-2111	15mm W x 12mm L, Parallel - 11mm H
47-2112	15mm W x 12mm L, Parallel - 12mm H
47-2113	15mm W x 12mm L, Parallel - 13mm H
47-2114	15mm W x 12mm L, Parallel - 14mm H
37-5806	15mm W x 15mm L, 5° Lordotic - 6mm H
37-5807	15mm W x 15mm L, 5° Lordotic - 7mm H
37-5808	15mm W x 15mm L, 5° Lordotic - 8mm H
37-5809	15mm W x 15mm L, 5° Lordotic - 9mm H
37-5810	15mm W x 15mm L, 5° Lordotic - 10mm H
37-5906	15mm W x 15mm L, Parallel - 6mm H
37-5907	15mm W x 15mm L, Parallel - 7mm H
37-5908	15mm W x 15mm L, Parallel - 8mm H
37-5909	15mm W x 15mm L, Parallel - 9mm H
37-5910	15mm W x 15mm L, Parallel - 10mm H

Double Ended Trials

Part #	Description
47-6006	12mm W x 12mm L, 5° Lordotic - 6/7mm H
47-6008	12mm W x 12mm L, 5° Lordotic - 8/9mm H
47-6010	12mm W x 12mm L, 5° Lordotic - 10/11mm H
47-6012	12mm W x 12mm L, 5° Lordotic - 12/13mm H
47-6206	15mm W x 12mm L, 5° Lordotic - 6/7mm H
47-6208	15mm W x 12mm L, 5° Lordotic - 8/9mm H
47-6210	15mm W x 12mm L, 5° Lordotic - 10/11mm H
47-6212	15mm W x 12mm L, 5° Lordotic - 12/13mm H
47-6406	15mm W x 15mm L, 5° Lordotic - 6/7mm H
47-6408	15mm W x 15mm L, 5° Lordotic - 8/9mm H
47-6410	15mm W x 15mm L, 5° Lordotic - 10/11mm H
47-6412	15mm W x 15mm L, 5° Lordotic - 12/13mm H

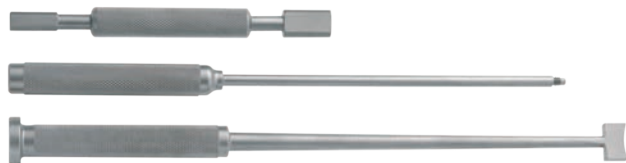
Rasps


Part #	Description
47-9306	12mm W x 12mm L, 5° Lordotic - 6mm H
47-9307	12mm W x 12mm L, 5° Lordotic - 7mm H
47-9308	12mm W x 12mm L, 5° Lordotic - 8mm H
47-9309	12mm W x 12mm L, 5° Lordotic - 9mm H
47-9506	15mm W x 12mm L, 5° Lordotic - 6mm H
47-9507	15mm W x 12mm L, 5° Lordotic - 7mm H
47-9508	15mm W x 12mm L, 5° Lordotic - 8mm H
47-9509	15mm W x 12mm L, 5° Lordotic - 9mm H

Instruments, Cases and Trays

Part #	Description
30-1030	Impactor
47-1020	Trial Handle, CONSTRUX Mini
47-1040	Implant Inserter, CONSTRUX Mini
47-1050	Packing Tool, CONSTRUX Mini
37-7000	PTC Implant Set
37-8000	PTC Carrying Case
47-9000	Instrument Case
47-9001	Top Level Tray
47-9002	Bottom Level Tray
47-9003	12mm W x 12mm D, Parallel Construx Mini PEEK Implant Caddy
47-9004	15mm W x 12mm D, Parallel Construx Mini PEEK Implant Caddy
47-9005	12mm W x 12mm D, Lordotic Construx Mini PEEK Implant Caddy
47-9006	15mm W x 12mm D, Lordotic Construx Mini PEEK Implant Caddy
47-9007	Modular Trials Caddy

*Items in blue available upon request only.



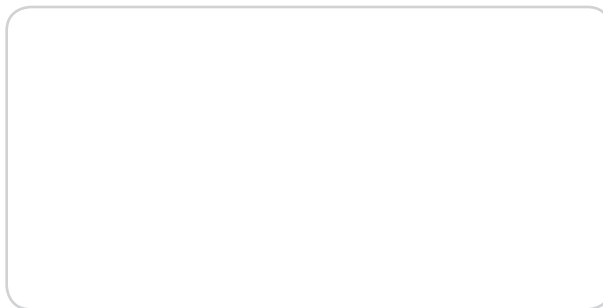
 Orthofix
3451 Plano Parkway
Lewisville, Texas 75056-9453 USA

 0086 **Rx Only**

 Medical Device Safety Service,
Schiffgraben 41, D-30175
Hanover, Germany

1.214.937.3199
1.888.298.5700
www.orthofix.com

Distributed by:



Proper surgical procedure is the responsibility of the medical professional. Operative techniques are furnished as an informative guideline. Each surgeon must evaluate the appropriateness of a technique based on his or her personal medical credentials and experience.

Please visit www.Orthofix.com/IFU for full information on indications for use, contraindications, warnings, precautions, adverse reactions information and sterilization.

