



# Performance Package



**XC caliber Articulated Ankle Fixator | XC caliber Meta-Diaphyseal Fixator**



## YOUR TOOLBOX... COMPLETE FOR THE FIRST TIME. XCALIBER STERILE KITS.

Made of an innovative composite plastic material, the XCaliber is stronger than conventional fixators, only much lighter. This means it's easier to handle, easier to apply, and more comfortable for the patient.

No obstruction to fracture visualization, allowing faster and easier reduction

Less radiation exposure for the surgical team

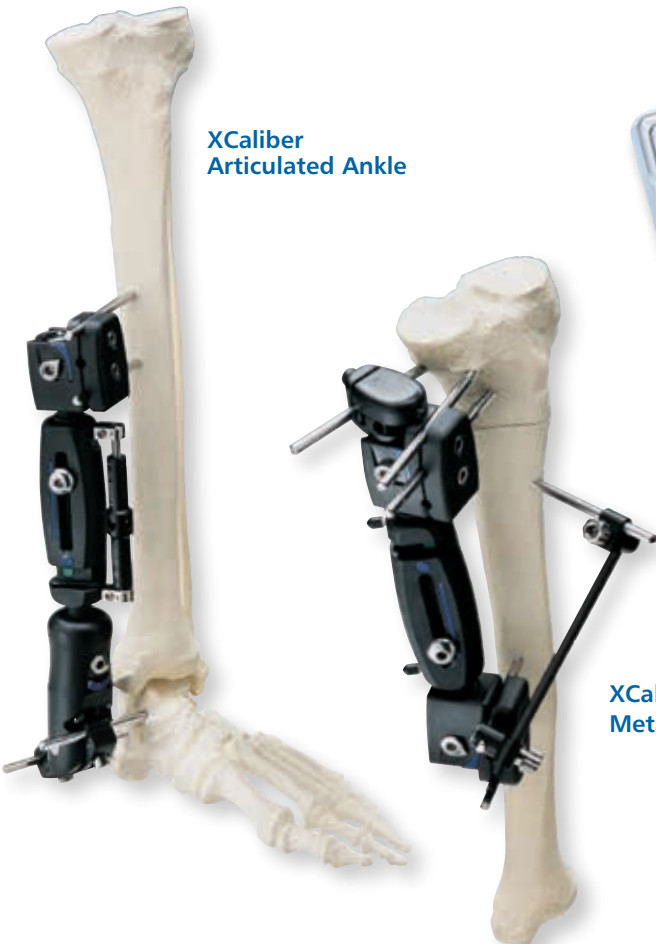
Easier to check callus formation and bone healing

Single use – no maintenance or sterilization costs

Minimal instrumentation – less inventory



**XCaliber  
Articulated Ankle**



**XCaliber  
Meta-Diaphyseal**

## XCALIBER ARTICULATED ANKLE



Ball-joint and telescoping body for anatomic reduction. Distraction unit for ligamentotaxis.



Radiolucent Ankle Pin Guide provides visualization of the rotational axis of the tibio-talar joint for correct screw positioning.



Excellent stability and early joint movement with the radiolucent Articulated Ankle Clamp.



Ball joints lock / unlock from either side using one instrument.



Joints allow correction up to 22° from straight position, in any direction, with fixator in place.

## XCALIBER META-DIAPHYSEAL



Multiple bone screw fixation possibilities with the same clamp.

Stable fixation (even in short bone segments) achieved through convergent and/or triangular screw positions.



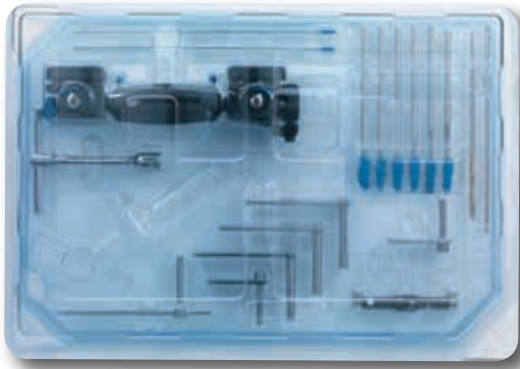
Supplementary screw holder and radiolucent bar available for versatile screw placement. (Not included in kit.)



Telescoping body for fracture reduction.



Dynamic C/D Unit for compression /distraction and early cyclic movement for callus stimulation.



**99-91600UE XCaliber Meta-Diaphyseal Complete Kit, Sterile**

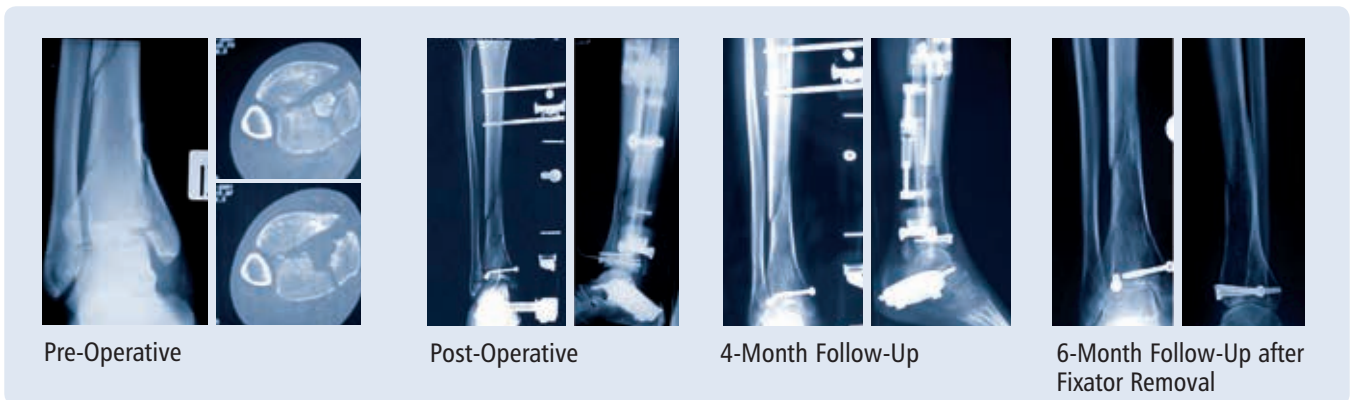
Part No.	Product Description	Quantity
91150	Universal T Wrench	1
91017	Universal Allen Wrench	1
11106	Drill Guide 3.2x40 mm	1
11104	Drill Guide 4.8x40 mm	1
91000	XCaliber Meta-Diaphyseal Fixator	1
11102	Screw Guide L 60 mm	3
91015	Dynamic Compression/Distractor Unit	1
99-611560	XCaliber Osteotome Screw 150/60	1
99-611550	XCaliber Osteotome Screw 150/50	1
99-611540	XCaliber Osteotome Screw 150/40	1
99-611530	XCaliber Osteotome Screws 150/30	3
1101101	Cannulated Drill Bit 3.2x200 mm	1
11014	X-Wires without olive 1.5x250 mm	2
1100101	Drill Bit 4.8x180 mm	1

**99-91647 XCaliber Ankle Complete Kit, Sterile**

Part No.	Product Description	Quantity
91150	Universal T Wrench	1
91017	Universal Allen Wrench	1
11106	Drill Guide 3.2x40 mm	1
11104	Drill Guide 4.8x40 mm	1
91047	XCaliber Ankle Fixator	1
11947	Radiolucent Ankle Pin Guide	1
11102	Screw Guide L 60 mm	3
91015	Dynamic Compression/Distractor Unit	1
99-611540	XCaliber Osteotome Screws 150/40	2
99-611530	XCaliber Osteotome Screws 150/30	3
1101101	Cannulated Drill Bit 3.2x200 mm	1
11014	X-Wires without olive 1.5x250 mm	2
1100101	Drill Bit 4.8x180 mm	1

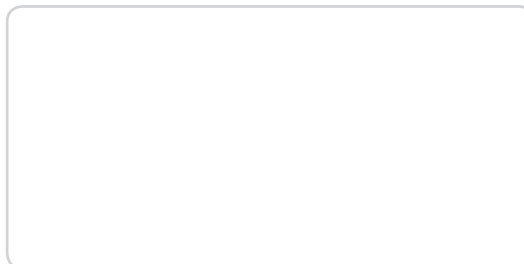
**XCaliber Ankle Case Study**

26-year-old male, fracture of tibial pilon C3 type (AO classification).



Case provided by: Dr. F. Lavini, Institute of Clinical Orthopaedics and Traumatology (Prof. P. Bartolozzi), University of Verona, Italy.

**Distributed by:**



Manufactured by:  
**ORTHOFIX Srl**  
 Via Delle Nazioni 9, 37012 Bussolengo (Verona), Italy  
 Telephone +39 045 6719000, Fax +39 045 6719380



Instructions for Use: See actual package insert for Instructions for Use.

Caution: Federal law (USA) restricts this device to sale by or on the order of a physician. Proper surgical procedure is the responsibility of the medical professional. Operative techniques are furnished as an informative guideline. Each surgeon must evaluate the appropriateness of a technique based on his or her personal medical credentials and experience. Please refer to the "Instructions for Use" supplied with the product for specific information on indications for use, contraindications, warnings, precautions, adverse reactions and sterilization.

[www.orthofix.com](http://www.orthofix.com)

XC-0903-PL-E0 B 06/16

