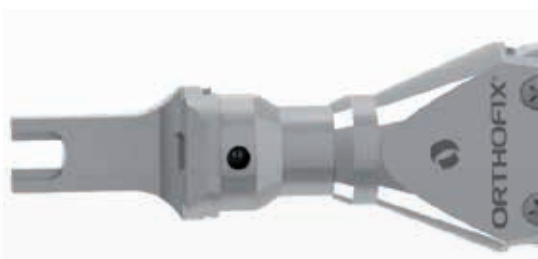
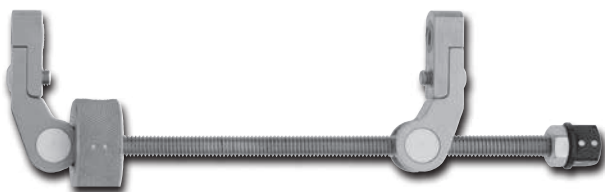




TRUELOK PARTS REFERENCE GUIDE

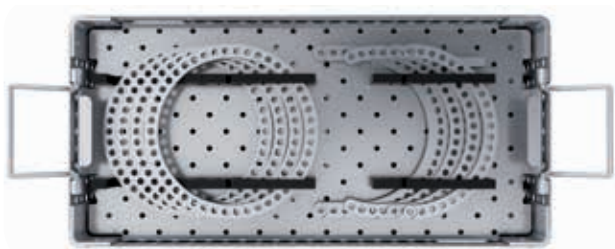


ORTHOFIX®

External Supports

Part Number

450500



A combination of any three layers can be combined to form a full rings tray.



Rings

Part Number Internal Diameter

56-10840	80mm
56-10860	100mm
56-10890	120mm
56-10900	130mm
56-10910	140mm
56-10920	150mm
56-10930	160mm
56-10940	170mm
56-10950	180mm
56-10960	200mm
56-10970	220mm (*)
56-10980	240mm (*)



Half Rings

Part Number Internal Diameter

56-11570	80mm
56-11580	100mm
56-11590	120mm
56-11600	130mm
56-11610	140mm
56-11620	150mm
56-11630	160mm
56-11640	170mm
56-11650	180mm
56-11660	200mm
56-11670	220mm (*)
56-11680	240mm (*)



5/8 Rings

Part Number Internal Diameter

56-12580	100mm
56-12590	120mm
56-12600	130mm
56-12610	140mm (*)
56-12620	150mm
56-12630	160mm (*)
56-12640	170mm
56-12650	180mm (*)
56-12660	200mm (*)



Foot Plate

Part Number Internal Diameter

56-13580	100mm
56-13590	120mm
56-13600	130mm
56-13610	140mm (*)
56-13620	150mm
56-13630	160mm (*)
56-13640	170mm
56-13650	180mm (*)
56-13660	200mm (*)

(*) Out of the tray

Double Row Foot Plate (Out of the tray)

Part Number	Internal Diameter
56-13625	150mm
56-13635	160mm
56-13655	180mm
56-13665	200mm



TrueLok RockerRail (Out of the Tray)

Part Number
56-24000 (2 items)



TrueLok System Rocker Rail Extension Kit (Out of the tray)

Part Number
56-24014 (4 items)



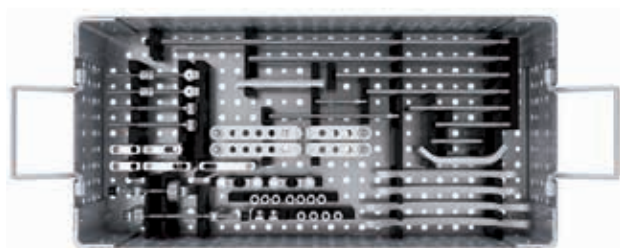
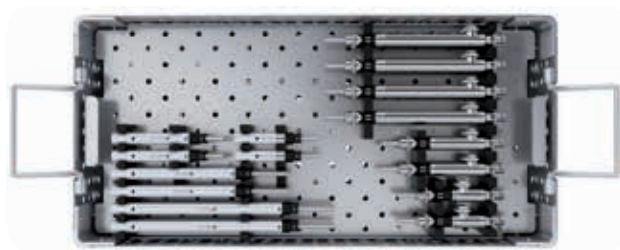
TL Dynamization Module (Out of the tray)

Part Number
54-24100
99-54-24100 (sterile)



Hinges, Distractors and Connections

Part Number
450504C



Universal Hinge

Part Number
55-1176



Cannulated Inline Hinge Assembly

Part Number **Length**
51-10430 100mm



Outboard Hinge Assembly

Part Number **Length**
51-10440 100mm



Hinge Rod, Threaded

Part Number **Length**
51-10300 60mm
51-10550 150mm



Telescopic Linear Distractor

Part Number **Length**
50-11010 70mm
50-10140 100mm
50-10150 150mm
50-10160 200mm



Part Number	Length	Description
99-50-11010	70mm	Sterile (out of the tray)
99-50-10140	100mm	Sterile (out of the tray)
99-50-10150	150mm	Sterile (out of the tray)
99-50-10160	200mm	Sterile (out of the tray)

Quick Adjust Strut

Part Number **Description**
50-10170 Short
50-10180 Medium
50-10190 Long



Part Number **Description**
99-50-10170 Short (Sterile - out of the tray)
99-50-10180 Medium (Sterile - out of the tray)
99-50-10190 Long (Sterile - out of the tray)

Plates

Part Number **Length**
55-10340 20mm
55-11670 30mm
55-11671 40mm
55-11680 50mm



Telescopic Hinge Extender

Part Number	Length
51-10220	100mm



Spacers

Part Number	Length
54-11650	15mm
54-11660	30mm



Oblique Support

Part Number
55-10.99



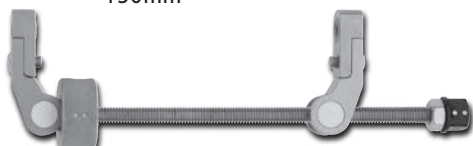
Threaded Rods

Part Number	Length
55-11720	60mm
55-10530	85mm
55-10060	115mm
55-10070	165mm
55-11730	200mm
55-11740	300mm
55-11750	400mm



Angular Distractor

Part Number	Length
51-10460	100mm
51-10470	150mm



Bracket Assembly, Swivel Stud, Angular Distractor

Part Number
51-10462



Foot Plate Extension

Part Number	Holes
56-14580	Three
56-14590	Five



Arch

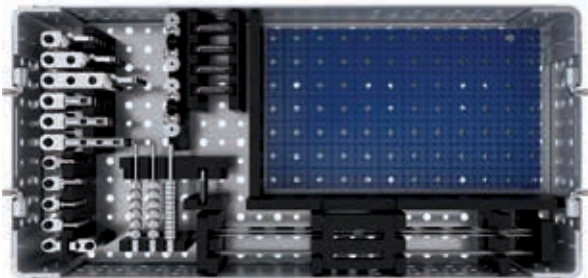
Part Number	Length
55-10760	90mm
55-10800	120mm



(TL+) Foot & Ankle Kit

Part Number

450502C



TL Plus Bayonet Wire with olive

Part Number

54-1217

Size

Ø 1.5mm x 300mm



TL Plus Bayonet Wire without olive

Part Number

54-1218

Size

Ø 1.5mm x 300mm



TL Plus Tension Limiter

Part Number

54-1141



TL Plus Washer

Part Number

54-1143

4mm Thick



TL Plus Hinge Female High Profile

Part Number

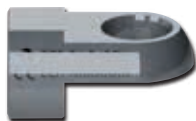
56-24050



TL Plus Hinge Female Low Profile

Part Number

56-24051



TL Plus 90° Hinge High Profile

Part Number

56-24060



TL Plus 90° Hinge Low Profile

Part Number
56-24061



TL Plus Hinge Male High Profile

Part Number
56-24070



TL Plus Hinge Male Low Profile

Part Number
56-24071



TL Plus non Lockable Universal Joint

Part Number
51-10420



TL Plus Threaded Hinge Rod

Part Number
51-10290

Length
30mm



TL Plus Nylon Insert Nut

Part Number
50-1010



TL Plus Twisted Plate

Part Number

54-11670

2 Holes

54-11680

3 Holes

54-11690

4 Holes



TL Plus 90° Plate

Part Number

81641

1 Holes

81642

2 Holes

81643

3 Holes



Fixation Elements

Part Number

450503C



Bayonet Wire with Stopper

Part Number

54-1215

Size

Ø 1.8mm x 400mm



Bayonet Wire

Part Number

54-1216

Size

Ø 1.8mm x 400mm



Universal Wire Fixation Bolt

Part Number

54-1152



TL Short Bolt, Wire Fixation, Universal

Part Number

54-1151



Slotted Washer

Part Number

54-1064



Half Pin Quick Connect (Out of the tray)

Part Number

54-11230

Size

4mm x 180mm

54-11240

5mm x 180mm

54-11250

6mm x 180mm



Part Number

99-54-11230

Size

4mm x 180mm

Description

Sterile

99-54-11240

5mm x 180mm

Sterile

99-54-11250

6mm x 180mm

Sterile

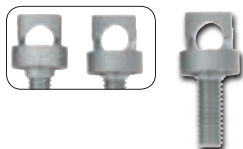
XCaliber Screws (Out of the tray)

Part Number	Size
non HA coated	
99-9115xx*	xxmm x 150mm
99-9126yy*	yymm x 260mm
HA coated	
99-6115xx*	xxmm x 150mm
99-6126yy*	yymm x 260mm



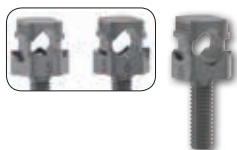
Universal Half Pin Fixation Bolt

Part Number	Description
54-11530	Accepts 4mm-5mm-6mm Half Pin



TrueLok 8mm Half Pin Fixation Bolt

Part Number	Description
54-11540	Accepts 5mm-6mm Half Pin



Posts

Part Number	Holes
54-11600	One
54-11610	Two
54-11620	Three
54-11630	Four
54-11640	Five



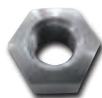
Bolts

Part Number	Length
54-1010	16mm
54-1018	20mm
54-10.50	12mm



Nut

Part Number	Description
50-1008	10mm Hex Head



Distraction Nut

Part Number	Description
50-13010	10mm Square Head with Captured Washer



Extended Nut

Part Number	Description
50-13020	10mm Hex Head



*Note: Ask Customer Service for availability in your country
* xx and yy refer to the thread length (range 30-90mm, step 10mm)*

Spacing Washer

Part Number Thickness
54-1142 2mm



Conical Washer Couple

Part Number
54-1150



Rubber Stoppers

Part Number Description
54-1133 Wire Stopper (red)
54-1136 Half Pin Stopper (grey)



Stopper Applicator

Part Number
54-1134



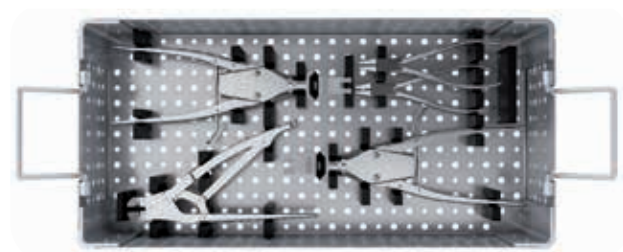
M6 X 1 Hex, Speednut

Part Number
54-2235



Instruments

Part Number
450501C



Hex Driver

Part Number
52-1018

Description
Straight, 1/8"



Hex Driver

Part Number
52-1020

Description
90°, 1/8"



Hex Driver

Part Number
52-10210

Description
1/8" Power Adapter



Wire Cutter

Part Number
W1003



Wire Tensioner

Part Number
54-1139



Part Number
20116735

Description
TL Short Tensioner Tip



Part Number
20116736

Description
Extended Tensioner
Tip Assembly



Part Number
20116731

Description
TrueLok System
Retaining Tensioner
Tip



Surgeon Wrench (10mm)

Part Number

54-1154



Surgeon Wrench, Hinged (10mm)

Part Number

54-1155



Tubular Wrench (10mm)

Part Number

54-2226

Description

10mm



Needle Nose Pliers

Part Number

54-2227



T-Handle

Part Number

54-2229

Description

T-Handle for Half Pins



Universal T-Wrench

Part Number

91150



Double Wrench (10mm) (Out of the tray)

Part Number

52-1061

Description

For Distraction Nuts
(Packaged Separately)



Bolt Wrench 8mm (Out of the tray)

Part Number

54-11560



Instrument Tray, TrueLok

Part Number 450501

Part Number	Description	Quantity
W1003	Wire Cutter	1
54-1139	TL Plus Wire Tensioner with Tip	2
54-2227	Needle Nose Pliers, Stainless Steel	2
52-1018	TL, 1/8' Hex Driver	1
52-1020	TL, Hex Driver, 90-Degree, 1/8"	1
54-1154	TL,Wrench, Combo, 10mm	2
54-1155	TL,Wrench, Hinged Combo, 10mm	2
54-2226	TL, 90 Degree Tubular Wrench	2
91150	Universal T-Wrench	1
52-10210	TL+ AO 1/8' Hex Power Driver Attachment	1
54-2229	T-Wrench With AO Connection	1

Ring Tray, TrueLok

Part Number 450500

A combination of any three layers can be combined to form a full rings tray.

450500-01C - LAYER 80-100 COMPLETE		
Part Number	Description	Quantity
56-10840	TL Plus Full Ring 80mm	4
56-11570	TL Plus Half Ring 80mm	2
56-12580	TL Plus Five Eighths Ring 100mm	1
56-10860	TL Plus Full Ring 100mm	4
56-11580	TL Plus Half Ring 100mm	2
56-13580	TL+ Footplate 100mm	1
450500-02C - LAYER 120 COMPLETE		
Part Number	Description	Quantity
56-10890	TL Plus Full Ring 120mm	4
56-11590	TL Plus Half Ring 120mm	2
56-12590	TL Plus Five Eighths Ring 120mm	1
56-13590	TL Plus Footplate 120mm	1
450500-03C - LAYER 130 COMPLETE		
Part Number	Description	Quantity
56-10900	TL Plus Full Ring 130mm	4
56-11600	TL Plus Half Ring 130mm	2
56-12600	TL Plus Five Eighths Ring 130mm	1
56-13600	TL+ Footplate 130mm	1
450500-04C - LAYER 140 COMPLETE		
Part Number	Description	Quantity
56-10910	TL Plus Full Ring, 140mm	4
56-11610	TL Plus Half Ring 140mm	2
56-12610	TL Plus Five Eighths Ring 140mm	1
56-13610	TL+ Footplate 140mm	1
450500-05C - LAYER 150 COMPLETE		
Part Number	Description	Quantity
56-12620	TL Plus Five Eighths Ring 150mm	1
56-13620	TL Plus Footplate 150mm	1
56-10920	TL Plus Full Ring, 150mm	4
56-11620	TL Plus Half Ring 150mm	2
450500-06C - LAYER 160 COMPLETE		
Part Number	Description	Quantity
56-10930	TL Plus Full Ring 160mm	4
56-11630	TL Plus Half Ring 160mm	2
56-12630	TL Plus Five Eighths Ring 160mm	1
56-13630	TL+ Footplate 160mm	1

450500-07C - LAYER 170 COMPLETE		
Part Number	Description	Quantity
56-10940	TL Plus Full Ring, 170mm	4
56-11640	TL Plus Half Ring 170mm	2
56-12640	TL Plus Five Eighths Ring 170mm	1
56-13640	TL+ Footplate 170mm	1
450500-08C - LAYER 180 COMPLETE		
Part Number	Description	Quantity
56-10950	TL Plus Full Ring 180mm	4
56-11650	TL Plus Half Ring 180mm	2
56-12650	TL Plus Five Eighths Ring 180mm	1
56-13650	TL+ Footplate 180mm	1
450500-09C - LAYER 200 COMPLETE		
Part Number	Description	Quantity
56-10960	TL Plus Full Ring, 200mm	4
56-11660	TL Plus Half Ring 200mm	2
56-12660	TL Plus Five Eighths Ring 200mm	1
56-13660	TL+ Footplate 200mm	1

Fixation Elements Tray, TrueLok

Part Number 450503

Part Number	Description	Quantity
50-1008	TL, Nut, Stainless Steel, 10mm	120
50-13010	TL+ Metal Distraction / Compression Nut	16
50-13020	TL+ Extended Nut M6 X 1	10
54-1010	TL, Bolt, 16mm	24
54-1018	TL, Bolt, 20mm	12
54-10.50	TL, Bolt, 12mm	24
54-1064	TL Washer, Slotted	8
54-1133	Stopper, Red Rubber, Wire	27
54-1136	Stopper, Gray Rubber, Half Pin	9
54-11530	TL+ Universal Half Pin Fixation Bolt 4mm - 6mm	12
54-11600	TL+ One Hole Post	4
54-11610	TL+ Two Hole Post	4
54-11620	TL+ Three Hole Post	4
54-11630	TL+ Four Hole Post	2
54-11640	TL+ Five Hole Post	2
54-1215	TL, Wire, W/Stopper, 1.8mm x 400mm	12
54-1216	TL, Wire, Bayonet, 1.8mm x 400mm	12
54-1134	TL, Applicator Rubber Stopper	2
54-1142	Stainless Steel Washer, 2mm Thick	12
54-1150	TL, Washer, Conical Pair	16
54-1152	TL, Bolt, Wire Fixation, Universal	24
54-1151	TL, Short Bolt, Wire Fixation, Universal	12
54-2235	M6 X 1 Hex, Speednut, Truelok System	16
54-11540	TL 8mm Half Pin Bolt	12

Hinges And Distractors Tray, TrueLok

Part Number 450504

Part Number	Description	Quantity
51-10300	TL+ Threaded Hinge Rod, 60mm	4
51-10430	TL+ Cannulated Inline Hinge Assembly	2
51-10440	TL+ Outboard Hinge Assembly	2
51-10460	TL+ Angular Distractor Assembly, 100mm	1
51-10470	TL,Bolt, 12mm	1
51-10550	TL+ Threaded Hinge Rod 150mm	4
55-10060	115mm Threaded Rod	8
55-10070	165mm Threaded Rod	8
55-10340	TL Plus 20mm Plate	8
55-10530	85mm Threaded Rod	8
55-10.99	TL, Oblique Support	4
55-11670	TL+ 30mm Plate	4
55-11671	TL+ 40mm Plate	4
55-11680	TL+ 50mm Plate	4
55-11720	60mm Threaded Rod	8
54-11650	TL+ Hex Standoff	4
54-11660	TL Plus Hex Standoff 30mm	8
55-1176	TL, Hinge, Universal	4
55-11730	TL+ Threaded Hex End Rod 200mm	4
55-11740	TL+ Threaded Hex End Rod 300mm	4
55-11750	TL+ Threaded Hex End Rod 400mm	4
51-10220	TL+, 100mm Telescopic Hinge Extender	2
56-14580	TL+ Foot Plate Extension 3 Hole	4
56-14590	TL+ Foot Plate Extension 5 Hole	4
55-10760	TL Plus 90mm Arch	2
55-10800	TL Plus 120mm Arch	2
51-10462	Bracket Assembly, Swivel Stud, Angular Distractor, Truelok	2
50-10140	TL+ Telescopic Linear Distractor 100mm	4
50-10150	TL+ Telescopic Linear Distractor 150mm	4
50-10160	TL+ Telescopic Linear Distractor 200mm	4
50-11010	TL+ Telescopic Linear Distractor 70Mm	4
50-10170	TrueLok Plus Short Quick Adjust Strut	4
50-10180	TrueLok Plus Medium Quick Adjust Strut	4
50-10190	TrueLok Plus Long Quick Adjust Strut	8

(TL+) Foot & Ankle Kit

Part Number 450502

Part Number	Description	Quantity
54-1217	TL Plus Bayonet Wire with olive L300mm Ø1.5mm	12
54-1218	TL Plus Bayonet Wire without olive L300mm Ø1.5mm	12
54-1213	TL Plus X-Wire with olive L300mm Ø1.5mm	on demand
54-1214	TL Plus X-Wire without olive L300mm Ø1.5mm	on demand
54-1141	TL Plus Tension Limiter	4
54-1143	TL Plus Washer 4mm Thick	12
54-1143M	TL Plus Washer 4mm Thick pack of 10	
56-24050	TL Plus Hinge Female High Profile	12
56-24051	TL Plus Hinge Female Low Profile	4
56-24060	TL Plus 90° Hinge High Profile	4
56-24061	TL Plus 90° Hinge Low Profile	4
56-24070	TL Plus Hinge Male High Profile	4
56-24071	TL Plus Hinge Male Low Profile	4
51-10420	TL Plus non Lockable Universal Joint	4
51-10290	TL Plus Threaded Hinge Rod L30mm	4
50-1010	TL Plus Nylon Insert Nut	12
50-1010M	TL Plus Nylon Insert Nut Pack of 10	
54-11670	TL Plus Twisted Plate 2 Holes	3
54-11680	TL Plus Twisted Plate 3 Holes	3
54-11690	TL Plus Twisted Plate 4 Holes	3
81641	TL Plus 90° Plate 1 Hole	2
81642	TL Plus 90° Plate 2 Holes	2
81643	TL Plus 90° Plate 3 Holes	2
450502	TL Plus Foot&Ankle Kit Tray Empty	
450502-01	TL Plus Foot&Ankle Kit Lid	
450502-02	TL Plus Foot&Ankle Kit Base	
450502C	TL Plus Foot&Ankle Kit Tray Complete	

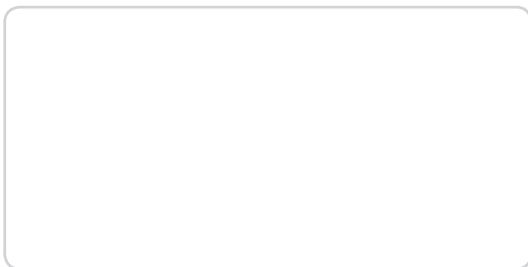


Manufactured by:
ORTHOFIX Srl

Via Delle Nazioni 9, 37012 Bussolengo (Verona), Italy
Telephone +39 045 6719000, Fax +39 045 6719380

www.orthofix.com

Distributed by:



CE 0123



ORTHOFIX®