

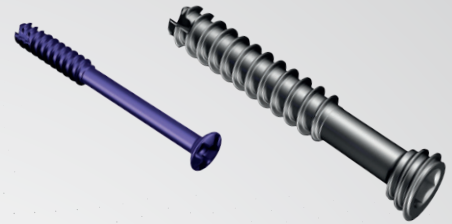


RIVAL™

○ REDUCE

□ VIEW

▶ BITE



BITE

VIEW

REDUCE

RIVAL™

A unique
implant system with
universal instrumentation
for the Foot & Ankle Surgeon



ORTHOFIX®

RIVAL™ INSTRUMENTATION

Features



Designed to be used across the product lines



Designed to help with inventory management



Designed to provide a comprehensive range of instruments



The RIVAL™ Instrumentation is a comprehensive set of instrument designed to be used across all three product lines within the RIVAL™ Foot & Ankle Portfolio.

The two level tray layout incorporates everything that is needed to perform surgeries from specific osteotomies to fractures within, but not limited to, the anatomical segments of forefoot, midfoot and hindfoot.

RIVAL™ INSTRUMENT SET - TOP TRAY

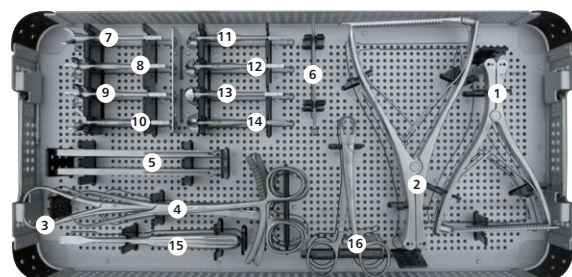
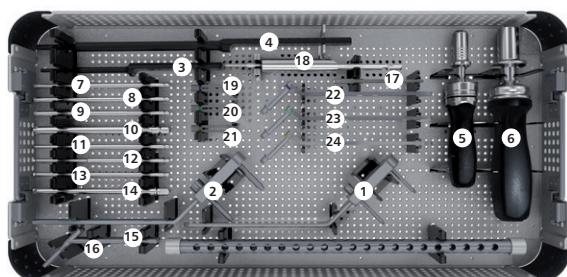
Part#	Description	Q.ty
001-A-40003	1 Parallel Wire Guide, 4.0/4.5mm Screw	1
001-A-65003	2 Paralle Wire Guide, 6.5/8.0mm Screws	1
001-A-20004	3 Small Depth Gauge, 0.9mm, 1.1mm and 1.5mm Guide Wires	1
001-A-65004	4 Large Depth Gauge, 2.8mm Guide Wire	1
001-A-01008	5 Small Ratcheting Handle, Cannulated, Quick Connect	1
001-A-03008	6 Large Ratcheting Handle, Cannulated, Quick Connect	1
001-A-20010	7 Cannulated Cruciform Driver, 2.0/2.5mm Headed Screw, Quick Connect	2
001-A-30010	8 Cannulated Cruciform Driver, 3.0/3.5mm Headed Screw, Quick Connect	2
001-A-40010	9 Cannulated Cruciform Driver, 4.0/4.5mm Headed Screw, Quick Connect	2
001-A-65010	10 Cannulated Cruciform Driver, 6.5/8.0mm Headed Screw, Quick Connect	2
001-A-20011	11 Cannulated Hex Driver, 2.0/2.5mm Headless Screw, Quick Connect	2
001-A-30011	12 Cannulated Hex Driver, 3.0/3.5mm Headless Screw, Quick Connect	2
001-A-40011	13 Cannulated Hex Driver, 4.0/4.5mm Headless Screw, Quick Connect	2
001-A-65011	14 Cannulated Hex Driver, 6.5/7.5mm Headless Screw, Quick Connect	2
001-A-20012	15 Pin Inserter, 0.9mm and 1.1mm Guide Wire	1
001-A-40012	16 Pin Inserter, 1.5mm Guide Wire	1
002-A-02003	17 T8 Screwdriver, Quick Connect	2
002-A-00009	18 Depth Gauge With Hook	1
002-A-20021	19 Rival Drill Guide Locking D1.8mm	1
002-A-20022	20 Rival Drill Guide Locking D2.0mm	1
002-A-20023	21 Rival Drill Guide Locking D2.3mm	1
002-A-00010	22 Rival Drill Guide Non-Locking D1.8mm	1
002-A-00011	23 Rival Drill Guide Non-Locking D2.0mm	1
002-A-00012	24 Rival Drill Guide Non-Locking D2.3mm	1

RIVAL™ INSTRUMENT SET - TRAY

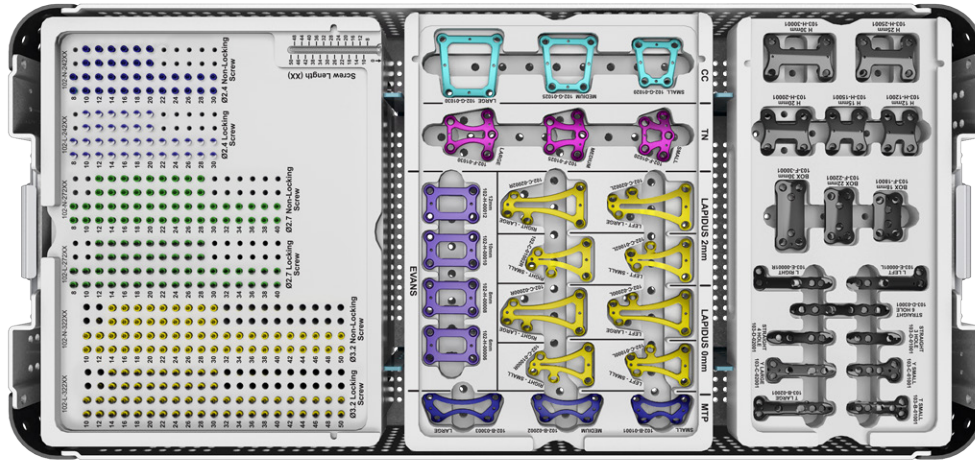
Part#	Description
001-A-11014	RIVAL™ Instrument case full
001-A-10014	RIVAL™ Instrument case empty

RIVAL™ INSTRUMENT SET - MIDDLE TRAY

Part#	Description	Q.ty
001-A-40006	1 Small Joint Distraction Forceps, 1.5mm Guide Wire	1
001-A-40007	2 Joint Compression Forceps	1
001-A-01007	3 Bone Reduction Forceps, 8	1
001-A-02007	4 Bone Reduction Forceps, 10	1
002-A-01003	5 Plate Bending Iron	2
002-A-00006	6 Plate Bending Joystick	2
002-A-14010	7 Cup Reamer D14mm Quick Connect	1
002-A-16010	8 Cup Reamer D16mm Quick Connect	1
002-A-18010	9 Cup Reamer D18mm Quick Connect	1
002-A-20010	10 Cup Reamer D20mm Quick Connect	1
002-A-14011	11 Cone Reamer D14mm Quick Connect	1
002-A-16011	12 Cone Reamer D16mm Quick Connect	1
002-A-18011	13 Cone Reamer D18mm Quick Connect	1
002-A-20011	14 Cone Reamer D20mm Quick Connect	1
003-A-00001	15 Soft Tissue Elevator	1
003-A-00002	16 Lobster Claw	1



Implant Set Tray



RIVAL™ - IMPLANT SET-TRAY

Part#	Description
001-A-11015	Implant Set Tray Complete
001-A-10015	Implant Set Tray Empty

Locking and Non-Locking Bone Screws

RIVAL™ Ø 2.4 LOCKING SCREWS		
Code	Length [mm]	Q.ty
102-L-24008	8	2
102-L-24010	10	4
102-L-24012	12	4
102-L-24014	14	4
102-L-24016	16	4
102-L-24018	18	4
102-L-24020	20	4
102-L-24022	22	2
102-L-24024	24	2
102-L-24026	26	2
102-L-24028	28	2
102-L-24030	30	2

RIVAL™ Ø 2.7 LOCKING SCREWS		
Code	Length [mm]	Q.ty
102-L-27008	8	2
102-L-27010	10	2
102-L-27012	12	4
102-L-27014	14	4
102-L-27016	16	4
102-L-27018	18	4
102-L-27020	20	4
102-L-27022	22	4
102-L-27024	24	4
102-L-27026	26	4
102-L-27028	28	4
102-L-27030	30	2
102-L-27032	32	2
102-L-27034	34	2
102-L-27036	36	2
102-L-27038	38	2
102-L-27040	40	2

RIVAL™ Ø 3.2 LOCKING SCREWS		
Code	Length [mm]	Q.ty
102-L-32010	10	2
102-L-32012	12	2
102-L-32014	14	4
102-L-32016	16	4
102-L-32018	18	4
102-L-32020	20	4
102-L-32022	22	4
102-L-32024	24	4
102-L-32026	26	4
102-L-32028	28	4
102-L-32030	30	4
102-L-32032	32	2
102-L-32034	34	2
102-L-32036	36	2
102-L-32038	38	2
102-L-32040	40	2
102-L-32042	42	2
102-L-32044	44	2
102-L-32046	46	2
102-L-32048	48	2
102-L-32050	50	2

RIVAL™ Ø 2.4 NON-LOCKING SCREWS		
Code	Length [mm]	Q.ty
102-N-24008	8	2
102-N-24010	10	4
102-N-24012	12	4
102-N-24014	14	4
102-N-24016	16	4
102-N-24018	18	4
102-N-24020	20	4
102-N-24022	22	2
102-N-24024	24	2
102-N-24026	26	2
102-N-24028	28	2
102-N-24030	30	2

RIVAL™ Ø 2.7 NON-LOCKING SCREWS		
Code	Length [mm]	Q.ty
102-N-27008	8	2
102-N-27010	10	2
102-N-27012	12	4
102-N-27014	14	4
102-N-27016	16	4
102-N-27018	18	4
102-N-27020	20	4
102-N-27022	22	4
102-N-27024	24	4
102-N-27026	26	4
102-N-27028	28	4
102-N-27030	30	2
102-N-27032	32	2
102-N-27034	34	2
102-N-27036	36	2
102-N-27038	38	2
102-N-27040	40	2

RIVAL™ Ø 3.2 NON-LOCKING SCREWS		
Code	Length [mm]	Q.ty
102-N-32010	10	2
102-N-32012	12	2
102-N-32014	14	4
102-N-32016	16	4
102-N-32018	18	4
102-N-32020	20	4
102-N-32022	22	4
102-N-32024	24	4
102-N-32026	26	4
102-N-32028	28	4
102-N-32030	30	4
102-N-32032	32	2
102-N-32034	34	2
102-N-32036	36	2
102-N-32038	38	2
102-N-32040	40	2
102-N-32042	42	2
102-N-32044	44	2
102-N-32046	46	2
102-N-32048	48	2
102-N-32050	50	2

Plates

RIVAL™ VIEW PLATES		
Code	Description	Q.ty
102-B-01001	MTP Plate, Small	1
102-B-02002	MTP Plate, Medium	1
102-B-03003	MTP Plate, Large	1
102-C-01000L	Lapidus Plate, Small, 0mm Step, Left	1
102-C-01002L	Lapidus Plate, Small, 2mm Step, Left	1
102-C-02000L	Lapidus Plate, Large, 0mm Step, Left	1
102-C-02002L	Lapidus Plate, Large, 2mm Step, Left	1
102-C-01000R	Lapidus Plate, Small, 0mm Step, Right	1
102-C-01002R	Lapidus Plate, Small, 2mm Step, Right	1
102-C-02000R	Lapidus Plate, Large, 0mm Step, Right	1
102-C-02002R	Lapidus Plate, Large, 2mm Step, Right	1
102-F-01020	TN Plate, Small	1
102-F-01025	TN Plate, Medium	1
102-F-01030	TN Plate, Large	1
102-G-01020	CC Plate, Small	1
102-G-01025	CC Plate, Medium	1
102-G-01030	CC Plate, Large	1
102-H-00006	Evans Plate, 6mm Spacer	1
102-H-00008	Evans Plate, 8mm Spacer	1
102-H-00010	Evans Plate, 10mm Spacer	1
102-H-00012	Evans Plate, 12mm Spacer	1

RIVAL™ REDUCE PLATES		
Code	Description	Q.ty
103-B-01001	T-Plate, Small	2
103-B-02001	T-Plate, Large	2
103-C-01001	Y-Plate, Small	2
103-C-02001	Y-Plate, Large	2
103-D-01001	Straight Plate, 3 Hole	2
103-D-02001	Straight Plate, 4 Hole	2
103-D-03001	Straight Plate, 6 Hole	2
103-E-00001L	L-Plate, Left	2
103-E-00001R	L-Plate, Right	2
103-F-18001	Box Plate, 18mm	1
103-F-22001	Box Plate, 22mm	1
103-F-30001	Box Plate, 30mm	1
103-H-12001	H-Plate, 12mm	1
103-H-15001	H-Plate, 15mm	1
103-H-20001	H-Plate, 20mm	1
103-H-25001	H-Plate, 25mm	1
103-H-30001	H-Plate, 30mm	1

RIVAL™ BITE

Headed Cannulated and Headless Compression Screws



Features and Benefits

▶ **Self-Tapping thread design**
The RIVAL™ BITE screws have been developed to simplify the surgical technique leading to shorter surgery time.

▶ **Unique, low profile head of RIVAL™ BITE Headed Cannulated Screws**
The screws have been developed to reduce risk of soft tissue irritation.

▶ **Self-Drilling thread design**
Both, the Headed Cannulated and the Headless Compression, screws have been developed to reduce the need for pre-drilling.

▶ **Variety of thread lengths**
The RIVAL™ BITE screws have been developed to offer surgeons optimal implant selection for each patient according to their needs.

Headed Cannulated Screws

Low profile
Unique, low profile head design with a cruciform driver in sizes from 2.0mm to 8.00mm



Specific thread lengths and diameters
Screws are offered in a variety of thread lengths and diameters from 2.0mm to 8.0mm

Self-tapping, self-drilling thread design

Headless Compression Screws

Screw compression
The difference between the pitch of the distal and proximal threads allows for compression



Hex-head connection
The screws are offered with 2.0mm, 3.0mm and 4.5mm hex head connections

Self-tapping, self-drilling thread design

Specific thread lengths and diameters
Screws are offered in a variety of thread lengths and diameters from 2.5mm to 7.0mm



Benefits to Surgeons

The self-tapping, self-drilling feature of both, BITE Headed Cannulated and Headless Compression Screws are designed to **reduce the surgery time** by **simplifying the operative technique**.

The RIVAL™ BITE Headed Cannulated and Headless Compression Screws have been designed with a wide range of sizes to **provide surgeons an optimal implant selection** to treat patients.

The RIVAL™ BITE Headless Compression Screws are designed with differing thread pitches to allow surgeons to apply **optimal compression to joints and osteotomies** where the implants are used.

RIVAL™ REDUCE

Fracture Plating System



Features

- Low profile, 1.3mm plate thickness
- Plates designed with oblong compression hole
- Locking screws lock flush into the REDUCE Fracture Plates
- Wide range of implants and sizes

Benefits

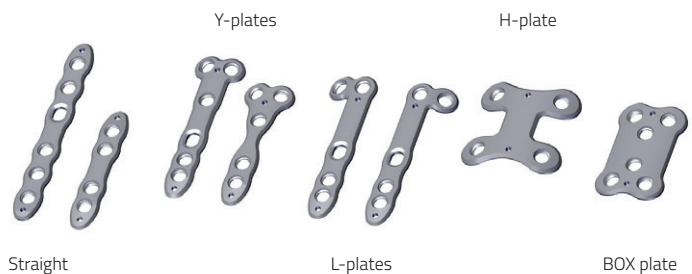
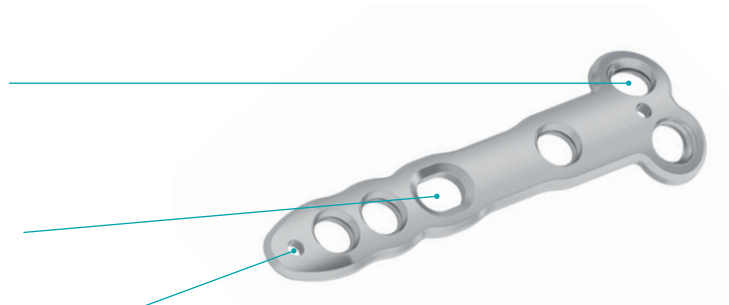
- REDUCE Fracture Plates have been designed to reduce soft tissue irritation
- REDUCE Fracture Plates provide compression capability
- REDUCE Fracture Plates are designed to reduce screw prominence
- The REDUCE Fracture Plating System is designed to provide surgeons with optimal implant selection

The REDUCE Fracture Plates

REDUCE Fracture Plates are designed to be used with 2.4mm, 2.7mm and 3.2mm locking and non-locking screws. The locking screws lock flush into the plates reducing screw prominence.

The REDUCE Fracture Plates include an oblong compression hole for intraoperative compression capabilities up to 1.1mm with the corresponding non-locking screws.

The REDUCE Fracture Plates are designed with guide wire holes for easy implant placement during surgery.



The compression feature through the oblong hole on the REDUCE plates allows for **joint or osteotomy compression**.

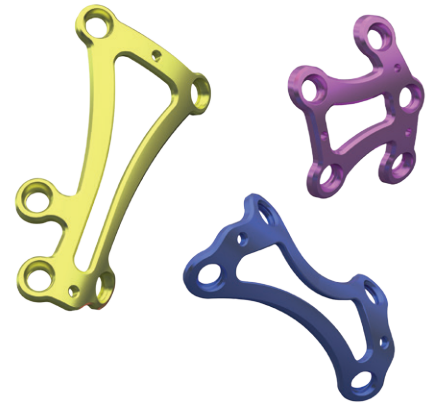
The RIVAL™ instrument set is designed to be used across all product lines within the RIVAL™ Foot & Ankle System to help with **inventory management** and **reduce the number of trays to be learned**.

Benefits to Surgeons

The wide range of implant sizes and designs of the REDUCE plates have been developed to **provide optimal implant selection** to surgeons.

RIVAL™ VIEW

Plating System



Features

- Low profile plate design
- Locking screws lock flush into plates
- Plates with perimeter loading design with central window
- Wide range of implants and sizes

Benefits

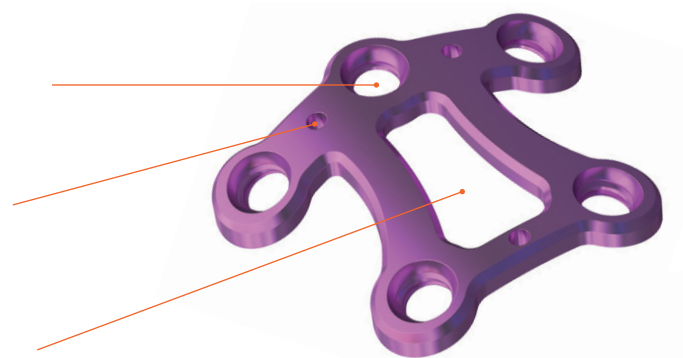
- The VIEW Plates are designed to reduce soft tissue irritation
- The screw and plate locking is designed to reduce screw prominence
- The VIEW Plates are designed to help surgeons with monitoring healing of fractures, osteotomies and joint fusions

The VIEW Plates

The VIEW Plates are designed to be used with 2.4mm, 2.7mm and 3.2mm locking and non-locking screws. The locking screws lock into the plates flush reducing screw prominence.

The VIEW Plates are designed with guide wire holes for easy implant placement during surgery.

The VIEW Plates are designed with a distinct window as per the perimeter loading design of the plates. The window provides surgeons the ability to monitor healing process of fractures, osteotomies, joint fusions and to apply additional bone grafts or biologics.



The RIVAL™ VIEW plates have an edge loading design with a central window **allowing surgeons to monitor fusion and osteotomy healing.**

The RIVAL™ Instrument set is designed to be used across all the product lines within the RIVAL™ Foot & Ankle System **reducing the number of trays to be learned and to help with inventory management.**

Benefits to Surgeons

The design of the window, for all VIEW plates, allows the surgeons to **apply compression to the affected joints and osteotomies** through the plate.



Manufactured by:
ORTHOFIX Srl
Via Delle Nazioni 9, 37012 Bussolengo (Verona), Italy
Telephone +39 045 6719000, Fax +39 045 6719380

CE 0123

www.orthofix.com

RI-1704-PL-E0 B 07/19

Distributed by:

