

GALAXY UNYCO CASE REPORT



1. CASE PRESENTATION

Patient details: 45-year-old male patient; metaphyseal tibia and medial malleolus, fibula, and calcaneus fractures.

Tibia fracture classification:

- AO classification: AO 42 A2
- Gustilo and Anderson classification: type II

Malleolus fracture classification:

- AO classification: AO 44 A3.1

Cause of injury: High energy trauma, motorcycle accident.



2. INITIAL TREATMENT

The surgeon initially opted for a skeletal traction treatment. However, due to worsening of soft tissue conditions, a nail could not be inserted as a definitive treatment and the surgeon decided to apply Galaxy UNYCO for enhanced stability while curing the soft tissues.

3. GALAXY UNYCO SURGERY



Galaxy UNYCO application time was 15 minutes only.

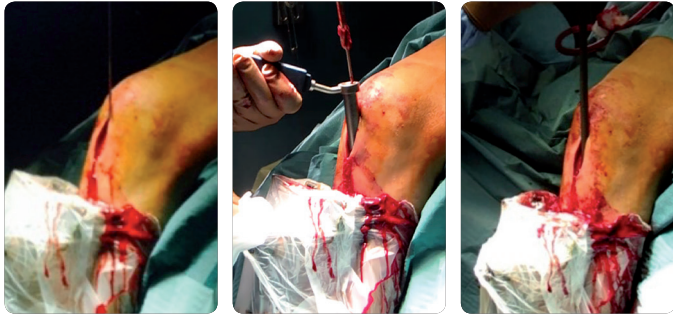


Two Large Multiscrew Clamps were used, each with two UNYCO Cancellous Screws in the metaphyseal area and two UNYCO Screws in the diaphyseal area.

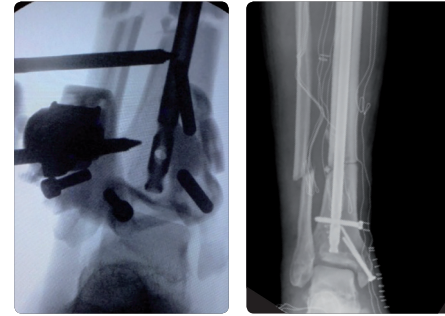
Following fracture reduction with Galaxy UNYCO in place, the surgeon decided to insert an additional UNYCO screw at the diaphyseal level to increase stability.

The compatibility between Galaxy Unyco and Galaxy Fixation Systems allowed to extend the frame to the foot and stabilize the calcaneus fracture using two bicortical screws.

4. DEFINITIVE TREATMENT



3 weeks later, the conversion to IMN was easily performed. In order to guarantee the sterility of surgical field, betadine and sterile bandages were used on Galaxy UNYCO. Reaming was performed only in the proximal 7 cm, after which a 9 mm unreamed nail was inserted.



During this procedure, even though the nail was inserted using a hammer, the UNYCO System kept the reduction perfectly aligned, allowing and simplifying the conversion.

5. FOLLOW UP AT 2 AND 5 MONTHS



At 2 months follow up from Galaxy UNYCO application, the reduction has been maintained and the soft-tissues are getting better.




At 5 months follow up, the fracture healed and the improvement of soft-tissues is significant. The patient can walk without pain and no particular complications or problems have occurred.

The surgeons were very satisfied with the System. In their opinion, the Galaxy UNYCO is useful especially in patients with soft tissue damage that precludes immediate treatment with an IMN. Because the screws do not cross the medullary canal, there is no need to wait several days after removal of the external fixator prior to definitive treatment with the IMN.

We thank Dr. Gianluigi Moro, Dr. Umberto Mezzadri and Dr. Gianfranco Fraschini, Ospedale San Raffaele, Milano, Italy for kindly providing X-rays, 3D-volumetric CT and case details.

Distributed by:




 Manufactured by:
 ORTHOFIX Srl
 Via Delle Nazioni 9, 37012 Bussolengo (Verona), Italy
 Telephone +39 045 6719000, Fax +39 045 6719380



Instructions for Use: See actual package insert for Instructions for Use.

Caution: Federal law (USA) restricts this device to sale by or on the order of a physician. Proper surgical procedure is the responsibility of the medical professional. Operative techniques are furnished as an informative guideline. Each surgeon must evaluate the appropriateness of a technique based on his or her personal medical credentials and experience. Please refer to the "Instructions for Use" supplied with the product for specific information on indications for use, contraindications, warnings, precautions, adverse reactions and sterilization.