

eight-Plate™
Guided Growth System



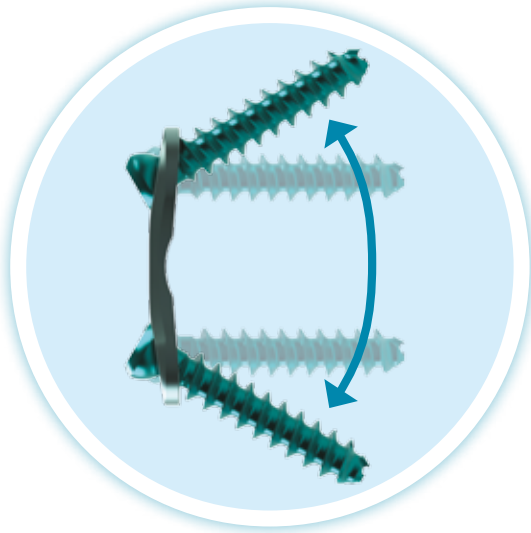
quad-Plate



eight-Plate

Easy
application,
solid growth
for kids



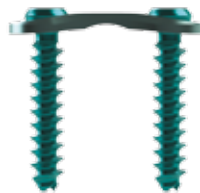
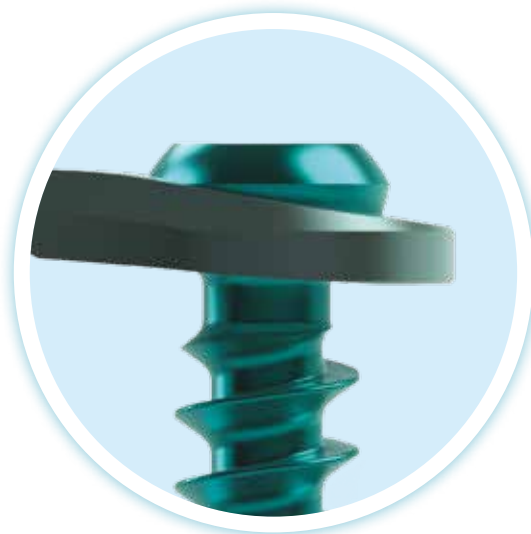


Up to 60° screw angulation

Increases the maximum angular correction and the possibility to cover also severe pathology in one surgical step*

New screw hole design

Increased range of drill and screw orientation in the insertion phase*



Low profile plate

Minimizes the total thickness of the implant minimizing the interference with the soft tissue

* Compared with previous version of eight-Plate.



Features and benefits

- Dedicated for redirecting the growth of long bones in growing children
- Color coded plates and screws
- Sterile and non-sterile implants
- eight-Plate (for two screws placement) and quad-Plate (for four screws placement)
- Unique screw hole design for a screw angulation up to 60 degrees



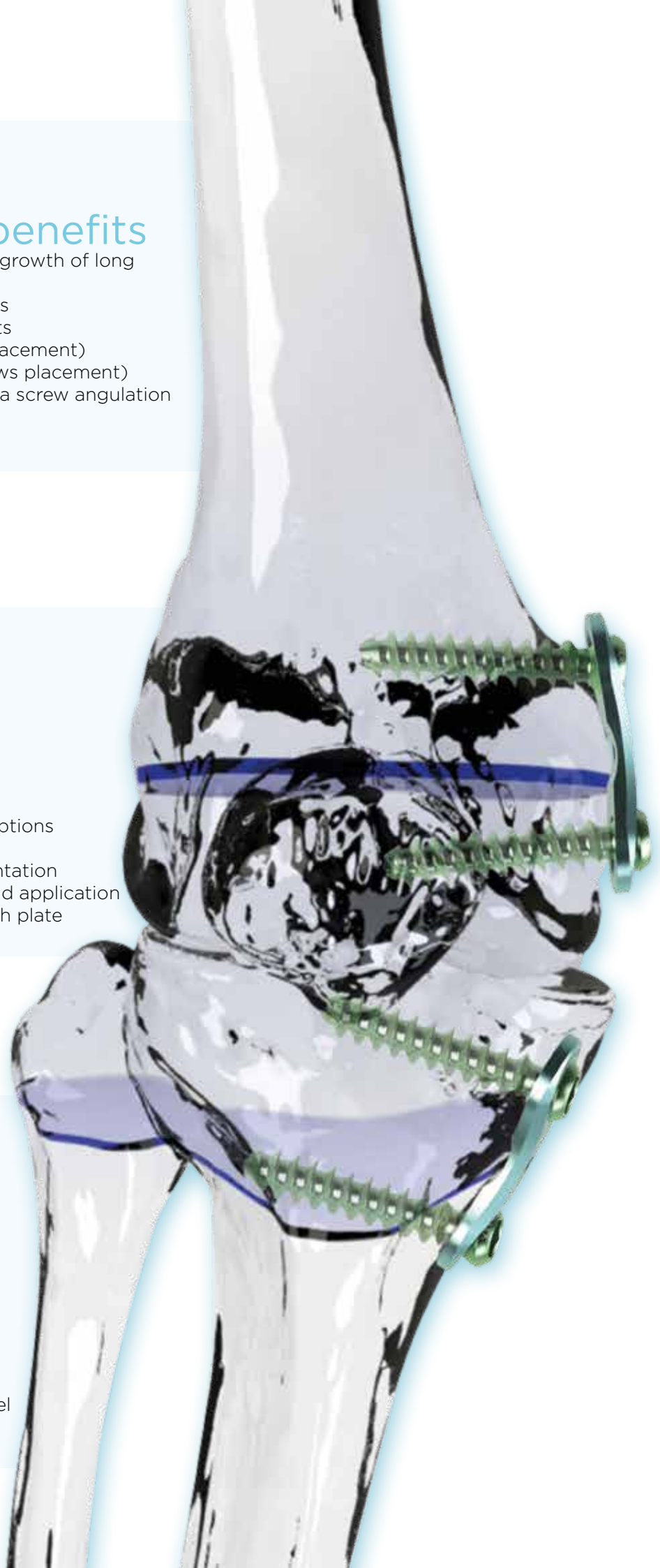
Benefits to Surgeons

- Plates sizes: 12, 16 and 20mm
- Cannulated and solid screw options
- Titanium alloy implants
- Optimized and lean instrumentation
- Central "dome" designed to aid application and removal across the growth plate



Benefits to Patients

- Minimally invasive
- Early weight bearing as tolerated by the patient and under surgeon discretion
- Titanium alloy implants to avoid allergic reaction to nickel
- Low profile plates



Central “dome”

For easy application across the growth plate



New screw sizes and diameter

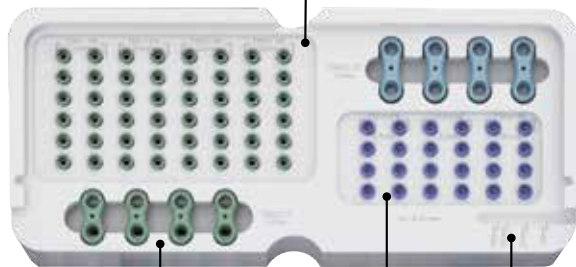
Optimizing the offered range for all applications



Caddy eight-Plate

Green = 4.5mm Cannulated Screws

- L 16mm
- L 24mm
- L 32mm
- L 36mm



Color Coded Plates
Two Plates per slot
Green = 12mm eight-Plate
Blue = 16mm eight-Plate

Measurement Guide

Blue = 4.5 mm Solid Screws

- L 24mm
- L 32mm
- L 36mm

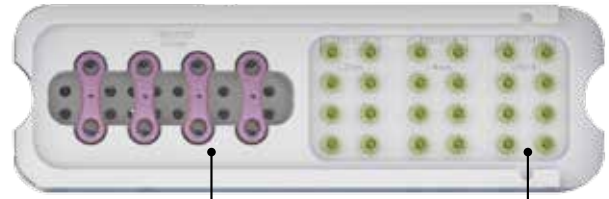
180991 - Eight Plate Plus Caddy (Empty)

Part#	Description	Qty
T80212	Guided Growth Plate System Plus TI eight Plate L 12mm	8
T80216	Guided Growth Plate System Plus TI eight Plate L 16mm	8
T80116	Guided Growth Plate System Plus TI Cannulated Screw L 16mm D 4.5mm	12
T80124	Guided Growth Plate System Plus TI Cannulated Screw L 24mm D 4.5mm	12
T80132	Guided Growth Plate System Plus TI Cannulated Screw L 32mm D 4.5mm	12
T80136	Guided Growth Plate System Plus TI Cannulated Screw L 36mm D 4.5mm	12
T80024	Guided Growth Plate System Plus TI Solid Screw L 24mm D 4.5mm	8
T80032	Guided Growth Plate System Plus TI Solid Screw L 32mm D 4.5mm	8
T80036	Guided Growth Plate System Plus TI Solid Screw L 36mm D 4.5mm	8

All the implants and the following instruments are available also in sterile packaging

Part#	Description
99-GP520CE	Cannulated Drill Bit D 3.2mm with Quick Connect Sterile
99-180010	Cannulated Drill Bit D 2.4mm with Quick Connect Sterile
99-180035	Cannulated Tap D 3.5mm with Quick Connect Sterile

Caddy Plus



Color Coded Plates
Two Plates per slot
Purple = 20mm eight-Plate **Yellow = 3.5mm Solid Screws**
L 12 mm
L 14 mm
L 16 mm

180993 - Extended Plus Line Caddy (Empty)

Part#	Description	Qty
T80220	Guided Growth Plate System Plus TI eight-Plate L 20mm	8
T80312	Guided Growth Plate System Plus TI Solid Screw L 12mm D 3.5mm	8
T80314	Guided Growth Plate System Plus TI Solid Screw L 14mm D 3.5mm	8
T80316	Guided Growth Plate System Plus TI Solid Screw L 16mm D 3.5mm	8

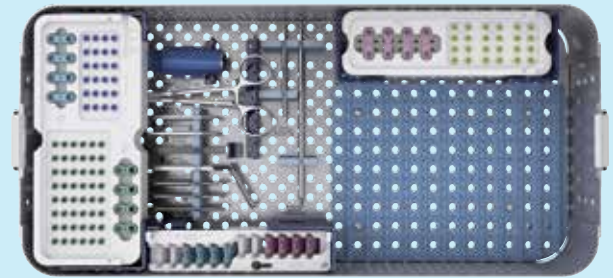
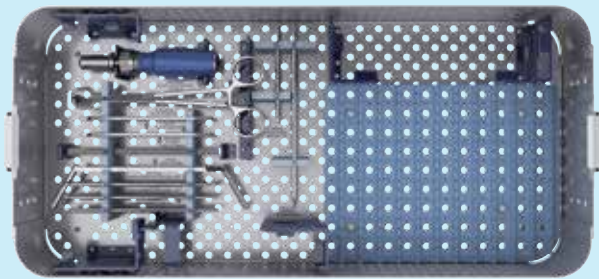
Caddy quad-Plate



Color Coded Plates
Blue = 16mm quad-Plate
Purple = 22mm quad-Plate

180992 - Quad Plate Plus Caddy (Empty)

Part#	Description	Qty
T80416	Guided Growth Plate System Plus TI quad-Plate L 16mm	4
T80422	Guided Growth Plate System Plus TI quad-Plate L 22mm	4



180990C Sterilization Box Complete

Instruments	
Part#	Description
GP540CE	K-Wire D 1.6mm L150mm
180005	Drill Guide
DH0455CE	Micro Ratcheting Handle with AO Connector Cannulated
GP520CE	Cannulated Drill Bit D 3.2mm with Quick Connect
180010	Cannulated Drill Bit D 2.4mm with Quick Connect
180035	Cannulated Tap D 3.5mm with Quick Connect
DH0464CE	Guided Growth Plate Holder
180015	Guided Growth Plate Bender
180020	Self-Retaining Cannulated Screwdriver Hex 3.5mm
DH0474CE	Guided Growth Screw Extractor
99-GP520CE	Cannulated Drill Bit D 3.2mm with Quick Connect Sterile
99-180010	Cannulated Drill Bit D 2.4mm with Quick Connect Sterile
99-180035	Cannulated Tap D 3.5mm with Quick Connect Sterile

Boxes	
Part#	Description
180990	Sterilization Box Empty
180990C	Sterilization Box Complete
180996	Sterilization Box Lid
180991	Eight Plate Plus Caddy Empty
180992	Quad Plate Plus Caddy Empty
180993	Extended Plus Line Caddy Empty
180997	Guided Growth System Plus Update Kit

Electronic Instructions for use available at the website <http://ifu.orthofix.it>

Electronic Instructions for use - Minimum requirements for consultation:

- Internet connection (56 kbps)
- Device capable to visualize PDF (ISO/IEC 32000-1) files
- Disk space: 50Mbytes

Free paper copy can be requested to customer service (delivery within 7 days):
tel +39 045 6719301, fax +39 045 6719370, e-mail: customerservice@orthofix.it

Distributed by:



Manufactured by:



ORTHOFIX Srl
Via Delle Nazioni 9, 37012 Bussolengo (Verona), Italy
Telephone +39 045 6719000, **Fax** +39 045 6719380
Web www.orthofix.com



EP-1702-PL-EO C 03/18

Proper surgical procedure is the responsibility of the medical professional. This Manual is furnished as an informative guideline. Each surgeon must evaluate the appropriateness of a technique based on his or her personal medical credentials and experience. Please refer to the Guided Growth Plate System Plus Instructions for Use (PQ EPP) supplied with the products for specific information on indications for use, contraindications, warnings, precautions, adverse effects and sterilization.