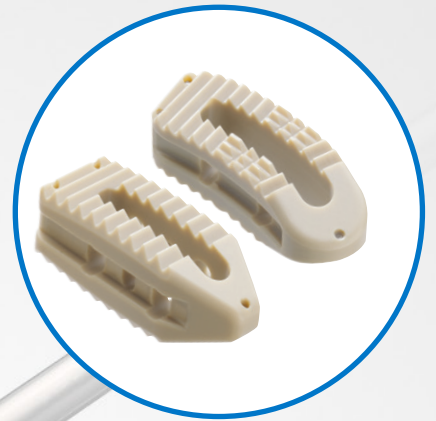


Forza™ PEEK

Spacer System



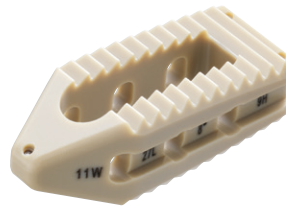
Forza™ PEEK

Spacer System

The FORZA™ Spacer System has been designed to help optimize Transforaminal Lumbar Interbody Fusion (TLIF) and Posterior Lumbar Interbody Fusion (PLIF) procedures with surgeon-designed implants and instruments.

Bulleted Spacers:

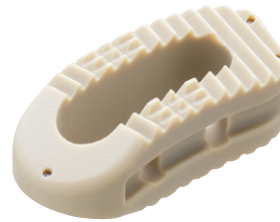
- Bulleted nose for assisting with distraction.
- Threaded connection to the Implant Inserter with grooves for a secure hold that is firm enough for an insert and rotate technique.
- Chamfered edges for easier rotation with the straight cage.
- Narrow double bullet nose on the straight cage regardless of the size to assist with distraction.
- Aggressive anti-migration ribs for resisting implant migration.
- Full height vertical tantalum markers 1mm from the ends for clear in-situ implant positioning.
- Provided sterile for inventory efficiency.



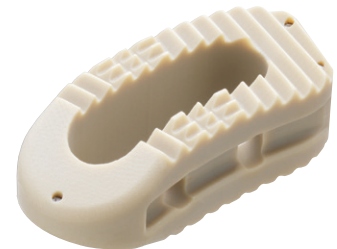
9mm Straight Spacer 0°



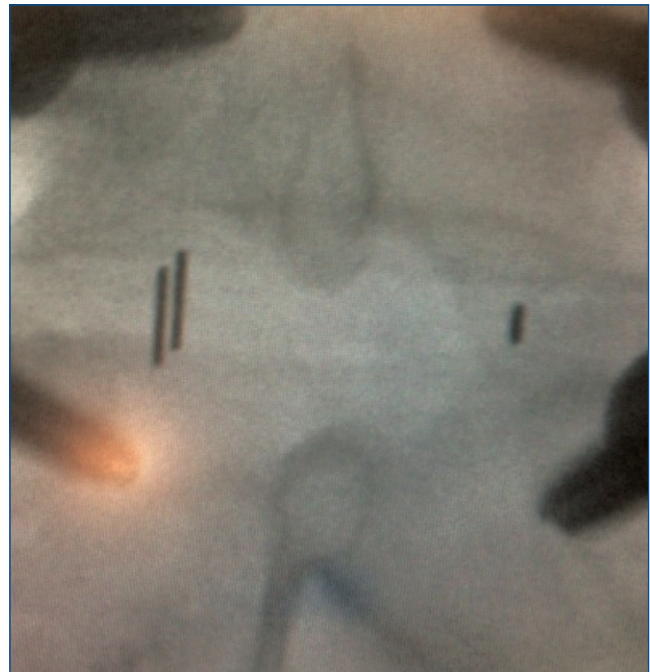
11mm Straight Spacer 8°



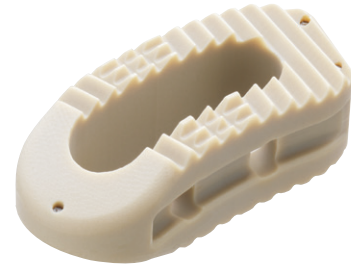
9mm Curved Spacer 0°



11mm Curved Spacer 8°



Designed to optimize Transforaminal Lumbar Interbody Fusion and Posterior Lumbar Interbody Fusion



Forza PEEK Standard Straight Implant Kit (89-7000)

Forza PEEK Standard PLIF/TLIF Straight Implants

Part #	Description	Qty
9W X 23L 8° PLIF		
89-7009SP	9W X 23L X 9H, 8°	4
89-7010SP	9W X 23L X 10H, 8°	4
89-7011SP	9W X 23L X 11H, 8°	4
89-7012SP	9W X 23L X 12H, 8°	4
89-7013SP	9W X 23L X 13H, 8°	4
89-7014SP	9W x 23L x 14H, , 8°	4
89-7015SP	9W X 23L X 15H, 8°	4
9W X 27L 8° TLIF		
89-9009SP	9W X 27L X 9H, 8°	3
89-9010SP	9W X 27L X 10H, 8°	3
89-9011SP	9W X 27L X 11H, 8°	3
89-9012SP	9W X 27L X 12H, 8°	3
89-9013SP	9W X 27L X 13H, 8°	3
89-9014SP	9W X 27L X 14H, 8°	3
89-9015SP	9W X 27L X 15H, 8°	3
89-9016SP	9W X 27L X 16H, 8°	3

Forza PEEK Standard Curved Implant Kit (89-7001)

Forza PEEK Standard Curved Implants

Part #	Description	Qty
9W X 27L 0° TLIF		
89-1706SP	9W X 27L X 6H, 0°	2
89-1707SP	9W X 27L X 7H, 0°	2
89-1708SP	9W X 27L X 8H, 0°	2
89-1709SP	9W X 27L X 9H, 0°	3
89-1710SP	9W X 27L X 10H, 0°	3
89-1711SP	9W X 27L X 11H, 0°	4
89-1712SP	9W X 27L X 12H, 0°	3
89-1713SP	9W X 27L X 13H, 0°	3
89-1714SP	9W X 27L X 14H, 0°	2
9W X 27L 8° TLIF		
89-4508SP	9W X 27L X 8H, 8°	2
89-4509SP	9W X 27L X 9H, 8°	2
89-4510SP	9W X 27L X 10H, 8°	2
89-4511SP	9W X 27L X 11H, 8°	2
89-4512SP	9W X 27L X 12H, 8°	2
9W X 31L 8° TLIF		
89-4708SP	9W X 31L X 8H, 8°	2
89-4709SP	9W X 31L X 9H, 8°	2
89-4710SP	9W X 31L X 10H, 8°	2
89-4711SP	9W X 31L X 11H, 8°	2
89-4712SP	9W X 31L X 12H, 8°	2

Note: All implant footprints outside of the standard offering, are available upon request

Streamlined Instrumentation:

- Firm connection to the implant, even for an insert and rotate technique with the straight cage.
- All Inserters provide great visualization capability.
- Modular Implant Inserter with different handle angle locations to match surgeon preference.
- MIS Inserter for improved visualization in tight spaces.
- Monolithic implant trials for speed and efficiency.



Corner Tamp



Articulating Tamp



Curette



Straight Trial



Monolithic Inserter
(Order by Request)



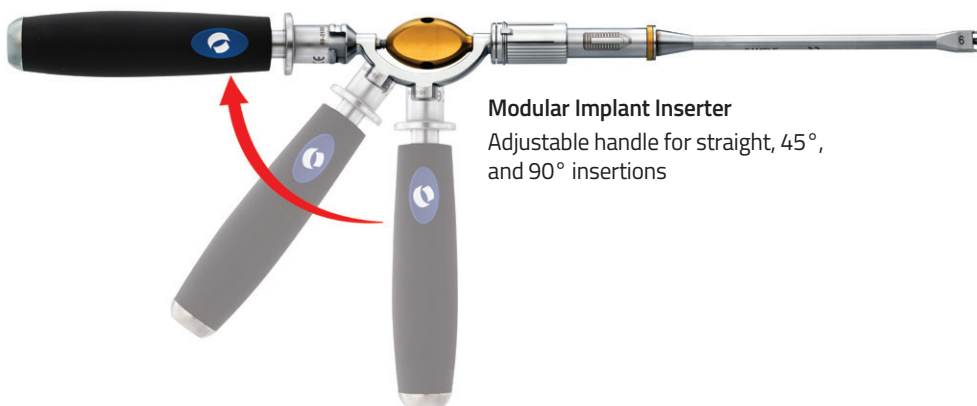
Rotating Cutter



MIS Inserter



Paddle Distractor



Modular Implant Inserter
Adjustable handle for straight, 45°, and 90° insertions

Discectomy Set 89-0031

Part #	Description	Qty
Top Tray		
89-0300	Anatomic Rasp	1
89-0301	Flat Rasp	1
89-0303	Curved Rasp	1
89-0600	Nerve Root Retractor, 70°	1
89-0601	Nerve Root Retractor, 90°	1
89-0602	Malleable Nerve Root Retractor	1
89-0650	2mm Pituitary Rongeur - Straight Biting	1
89-0651	2mm Pituitary Rongeur - Up Biting	1
89-0652	4mm Pituitary Rongeur - Straight Biting	1
89-0653	4mm Pituitary Rongeur - Up Biting	1

Middle Tray

89-0372	#0 Curette Straight- Serrated	1
89-0373	#1 Curette Straight- Serrated	1
89-0376	#0 Curette Up- Serrated	1
89-0377	#1 Curette Up- Serrated	1
89-0380	#0 Curette Down- Serrated	1
89-0381	#1 Curette Down- Serrated	1
89-0385	#1 Curette Right- Serrated	1
89-0389	#1 Curette Left- Serrated	1
89-0390	Small Ring Curette - 6W x 10L	1
89-0391	Large Ring Curette - 10W x 10L	1

Bottom Tray

89-0250	6mm Paddle Distractor	1
89-0251	7mm Paddle Distractor	1
89-0252	8mm Paddle Distractor	1
89-0253	9mm Paddle Distractor	1
89-0254	10mm Paddle Distractor	1
89-0255	11mm Paddle Distractor	1
89-0256	12mm Paddle Distractor	1
89-0257	13mm Paddle Distractor	1
89-0258	14mm Paddle Distractor	1
89-0259	15mm Paddle Distractor	1
89-0260	16mm Paddle Distractor	1

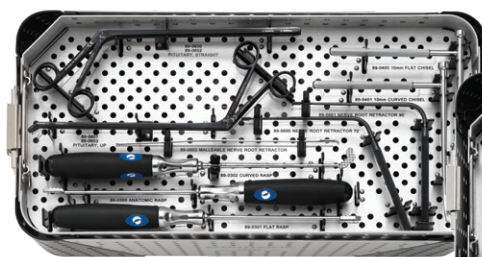
Part #	Description	Qty
89-0406	6mm Rotating Cutter	1
89-0407	7mm Rotating Cutter	1
89-0408	8mm Rotating Cutter	1
89-0409	9mm Rotating Cutter	1
89-0410	10mm Rotating Cutter	1
89-0411	11mm Rotating Cutter	1
89-0412	12mm Rotating Cutter	1
89-0413	13mm Rotating Cutter	1
89-0414	14mm Rotating Cutter	1
89-0415	15mm Rotating Cutter	1
89-0416	16mm Rotating Cutter	1

Discectomy Case

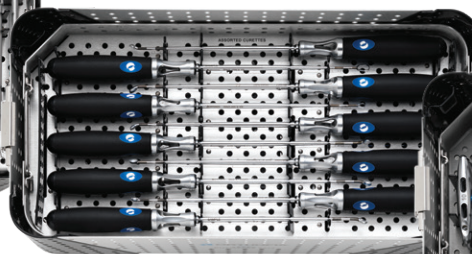
89-0092	Discectomy Case	
---------	-----------------	--

Order by Request - Discectomy Instruments

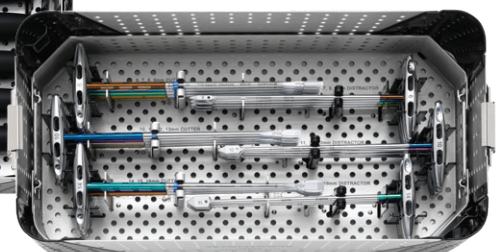
89-0351	#00 Curette Straight - Smooth
89-0353	#1 Curette Straight - Smooth
89-0355	#00 Curette Up - Smooth
89-0356	#0 Curette Up - Smooth
89-0357	#1 Curette Up - Smooth
89-0359	#00 Curette Down - Smooth
89-0360	#0 Curette Down - Smooth
89-0361	#1 Curette Down - Smooth
89-0364	#0 Curette Right - Smooth
89-0365	#1 Curette Right - Smooth
89-0368	#0 Curette Left - Smooth
89-0369	#1 Curette Left - Smooth
89-0342	#00 Curette 90° Down - Smooth
89-0343	#0 Curette 90° Down - Smooth
89-0344	#1 Curette 90° Down - Smooth
89-0346	#00 Curette 90° Down - Serrated
89-0347	#0 Curette 90° Down - Serrated
89-0348	#1 Curette 90° Down - Serrated



Top Level



Middle Level



Bottom Level

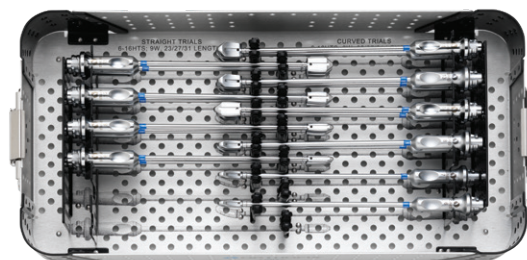
Instrument Set 89-0021

Part #	Description	Qty
Top Tray		
89-0100	Universal Handle	2
NA	9mm Straight Modular Implant Inserter (assembled)	
NA	11mm Straight Modular Implant Inserter (assembled)	
89-0113	Implant Inserter Body (C-Shaft) - (included within assembled Modular Implant Inserters)	2
89-0108	9mm Straight Implant Remover	1
89-0110	11mm Straight Implant Remover	1
89-0112	MIS Inserter	1
89-0114	9mm Straight Implant Shaft (1 is included within the assembled)	2
89-0116	11mm Straight Implant Shaft	2
89-0117	9mm Curved Implant Shaft (1 is included within the assembled Modular Implant Inserter provided in the set)	2
89-0119	11mm Curved Implant Shaft	2
89-0120	Threaded Insert	6
89-0121	Impact Cap	1
89-0200	Slap Hammer	1
Bottom Tray		
89-0153	9mm Tamp	1
89-0155	11mm Tamp	1
89-0156	Corner (Y) Tamp	1
35-5001	Funnel	1
35-5002	Plunger	1
89-0500	Bone Packing Tool	Order By Request
89-0509	9mm Monolithic Straight Implant Inserter	Order By Request
89-0511	11mm Monolithic Straight Implant Inserter	Order By Request
89-0609	9mm Articulating Tamp	Order By Request
89-0611	11mm Articulating Tamp	Order By Request

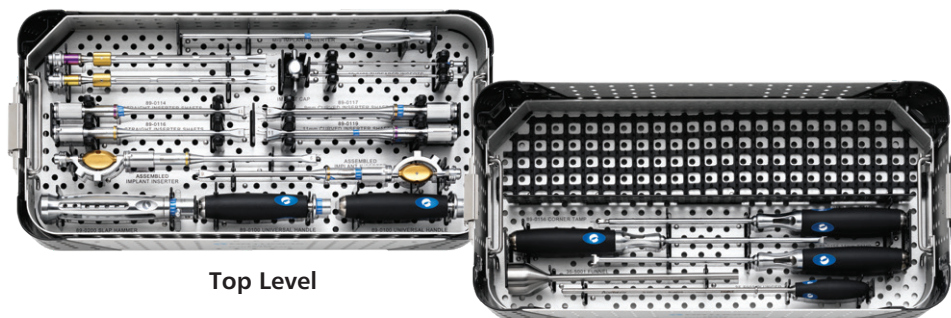
Instruments Case

89-0094	Instruments Case	1
---------	------------------	---

Part #	Description	Qty
Trial Set 89-0022 - Order By Request		
89-0093	Trial Case	1
89-0206	9W x 27L x 6H, 0° Straight Trial	1
89-0207	9W x 27L x 7H, 0° Straight Trial	1
89-0208	9W x 27L x 8H, 0° Straight Trial	1
89-0209	9W x 27L x 9H, 0° Straight Trial	1
89-0210	9W x 27L x 10H, 0° Straight Trial	1
89-0211	9W x 27L x 11H, 0° Straight Trial	1
89-0212	9W x 27L x 12H, 0° Straight Trial	1
89-0213	9W x 27L x 13H, 0° Straight Trial	1
89-0214	9W x 27L x 14H, 0° Straight Trial	1
89-0215	9W x 27L x 15H, 0° Straight Trial	1
89-0216	9W x 27L x 16H, 0° Straight Trial	1
89-0306	9W x 27L x 6H, 0° Curved Trial	1
89-0307	9W x 27L x 7H, 0° Curved Trial	1
89-0308	9W x 27L x 8H, 0° Curved Trial	1
89-0309	9W x 27L x 9H, 0° Curved Trial	1
89-0310	9W x 27L x 10H, 0° Curved Trial	1
89-0311	9W x 27L x 11H, 0° Curved Trial	1
89-0312	9W x 27L x 12H, 0° Curved Trial	1
89-0313	9W x 27L x 13H, 0° Curved Trial	1
89-0314	9W x 27L x 14H, 0° Curved Trial	1
89-0315	9W x 27L x 15H, 0° Curved Trial	1
89-0316	9W x 27L x 16H, 0° Curved Trial	1



One-Level



Top Level

Bottom Level

Please visit [Orthofix.com/IFU](https://www.orthofix.com/IFU) for full information on indications for use, contraindications, warnings, precautions, adverse reactions information and sterilization.

Caution: Federal law (USA) restricts this device to sale by or on the order of a physician. Proper surgical procedure is the responsibility of the medical professional. Operative techniques are furnished as an informative guideline. Each surgeon must evaluate the appropriateness of a technique based on his or her personal medical credentials and experience.

 Orthofix
3451 Plano Parkway
Lewisville, Texas 75056-9453 USA
1.214.937.3199
1.888.298.5700
www.orthofix.com

EC REP Medical Device Safety Services (MDSS):
Schiffgraben 41
30175, Hannover
Germany
www.mdss.com

Rx Only
 2797

Orthofix products or services referenced herein are trademarks or registered trademarks of Orthofix Medical Inc. and its group of companies. All rights reserved.

[orthofix.com](https://www.orthofix.com)

FO-2204 Orthofix US LLC 6/2022

 **ORTHOFIX**[®]
SPINE